

NORTHERN NEVADA WATER PLANNING COMMISSION AGENDA

Wednesday, April 7, 2010
1:30 p.m.

Washoe County Commission Chambers
1001 East Ninth Street
Reno, Nevada

1. Roll Call and determination of presence of a quorum.
2. Approval of agenda.
3. Approval of the minutes from the January 6, 2010 meeting.
4. Public Comments. * (Three-minute time limit per person.)
5. Election of Chairman and Vice Chairman for the term April 2010 to April 2011, and possible direction to staff.
6. Discussion and recommendation to the Western Regional Water Commission (WRWC) regarding comparison of the draft Washoe County consensus population forecast for 2030 and the estimated population that can be supported by the sustainable water resources as set forth in the Comprehensive Regional Water Management Plan, Jim Smitherman, WRWC Water Resources Program Manager.
7. Status report on development of the 2011 Comprehensive Regional Water Management Plan, including outline, timeline and contractual services, and possible direction to staff, Jim Smitherman.
8. Review of the Western Regional Water Commission ("WRWC") tentative budget for fiscal year 2010-2011, and possible recommendation to the WRWC, Jim Smitherman.
9. Update on the activities of the Legislative Committee to Oversee the Western Regional Water Commission, Jim Smitherman . *
10. Program Manager's Report, Jim Smitherman *
 - a. Status report of Projects and Work Plan supported by the Regional Water Management Fund
 - b. Financial report on the Regional Water Management Fund
 - c. Truckee River Flood Management Project status report
 - d. Informational report from the NNWPC representative on the Truckee Meadows Water Authority Standing Advisory Committee

Northern Nevada Water Planning Commission Agenda for April 7, 2010

Page 2

11. Discussion and possible direction to staff regarding agenda items for the May 5, 2010, Commission meeting and future meetings, Jim Smitherman.
12. Commission comments. *
13. Staff comments. *
14. Public Comments. * (Three-minute time limit per person.)
15. Adjournment.

*Indicates a non-action item

Notes: Items on the agenda without a time designation may not necessarily be considered in the order in which they appear. The Commission may take action on any of the action items listed.

Facilities in which this meeting is being held are accessible to the disabled. Persons with disabilities who require special accommodations or assistance (e.g. sign language interpreters or assisted listening devices) at the meeting should notify the Washoe County Department of Water Resources, at 954-4665, 24 hours prior to the meeting.

In accordance with NRS 241.020, this agenda has been posted at the following locations: Reno City Hall (1 East First Street), Sparks City Hall (431 Prater Way), Sparks Justice Court (630 Greenbrae Dr), Sun Valley GID (5000 Sun Valley Blvd.), TMWA (1355 Capital Blvd.), Washoe County Administration Building (1001 E. 9th Street), Washoe County Clerk's Office (Court and Virginia Streets), Washoe County Central Library (301 South Center St.), Washoe County Department of Water Resources (4930 Energy Way), Galena Market (19990 Thomas Creek Rd.), Galena High School (3600 Butch Cassidy Way), South Valleys Library (15650A Wedge Parkway), the Northern Nevada Water Planning Commission (NNWPC) website: <http://www.washoecounty.us/water/nnwpc.htm>, and the Western Regional Water Commission's (WRWC) website: <http://www.wrwc.us/meetings.html>

**NORTHERN NEVADA WATER PLANNING COMMISSION
MINUTES**

Wednesday, January 6, 2010

The regular meeting of the Northern Nevada Water Planning Commission (NNWPC) was held on Wednesday, January 6, 2010 in the Washoe County Commission Chambers, 1001 East Ninth Street, Reno, Nevada.

- 1. Roll Call and determination of presence of a quorum** – Chairman Seidel called the meeting to order at 1:40 p.m. There was a quorum present.

Voting Members Present:

Wayne Seidel, Chairman
George W. Ball, Jr., Vice-Chairman
Michael J. DeMartini
John Erwin
John Flansberg
John Jackson
Rosemary Menard
Darrin Price
Jerry Schumacher
Stan Shumaker

Voting Members Absent:

Mickey Hazelwood

Non-Voting Members Present:

Harry Fahnestock
Kelvin Hickenbottom

Non-Voting Members Absent:

John Bird
David Noble
Jon Palm

Staff Members Present:

Jim Smitherman
Chris Wessel
June Davis
John Rhodes, Legal Counsel

- 2. Approval of the agenda.**

Commissioner Price made a motion to approve the January 6, 2010 NNWPC agenda as posted. Commissioner Ball seconded the motion, which carried unanimously.

- 3. Approval of the minutes from the December 2, 2009 meeting.**

The minutes of the December 2, 2009 NNWPC meeting were submitted for approval. Commissioner Flansberg made a motion to approve the minutes as submitted. Commissioner Ball seconded the motion, which carried unanimously. Commissioners Price, Shumaker and Erwin abstained due to absence from the December meeting.

- 4. Public Comments.**

Chairman Seidel called for public comments and hearing none, closed the public comment period.

- 5. Review and discussion of draft Water Resources chapter to be included in the 2011 Comprehensive Regional Water Management Plan, including sustainable water resources available in Washoe County and population that can be supported by sustainable water resources to address issues raised by Washoe County Ballot Question #3 (2008), and possible direction to staff.**

Chairman Seidel invited Jim Smitherman to present this item. Mr. Smitherman referred to the staff report

and a PowerPoint presentation, which included the following points:

Overview of Water Resources

- Sources of Water
 - Surface Water
 - Groundwater
 - Reclaimed Water
- Water Resources Baseline Table – Mr. Smitherman referred to the Draft Water Baseline Table and explained the basins and associated columns and notes. He clarified that the table is intended to show water resources that are quantified adequately for twenty-year planning purposes. He added that the commitment numbers came from last year’s Comprehensive Regional Water Management Plan (“Water Plan”) Amendment and will be reviewed and updated as needed.
 - Truckee River and Tributary Water Resources
 - TROA, Orr Ditch Decree, Water Rights, State Engineer Decisions
 - Groundwater Resources
 - Perennial Yield Estimate, Water Rights, State Engineer Decisions
 - Reclaimed Water Resources
 - WRF Flows not Committed to Return Requirements

Factors Affecting Water Resource Sustainability

- Sustainability
 - Definition – The Chapter includes one and a half pages explaining “sustainability” in the context of the Water Plan, in relation to perennial yield estimates and legal access to the water. The Chapter also includes the methodology used for compiling the Baseline Table, as well as a purveyor or local government’s ability to accept rights for service or to improve land use planning based on independent evaluation of the available water.
 - Proposed Regional Plan Amendments
 - NNWPC and WRWC to compare Consensus Forecast with Sustainable Water Resources – Mr. Smitherman referred to the “Decision Tree – Regional Population Forecast based on Water Sustainability”, which is a procedural flow chart. He reviewed the process based on different scenarios.

Commissioner Menard asked what sort of changes might be made that would allow the same amount of water to serve additional people. Mr. Smitherman stated that for instance, development densities could be adjusted (i.e., people could move into a more dense development pattern, most likely reducing the irrigated acreage). He added that such land use density revisions would need approval of Regional Planning, which would be reflected in the Master Plans.

Commissioner DeMartini asked from where the 20-year planning horizon was chosen. Mr. Smitherman stated it is a requirement of the Regional Plan, with which the Water Plan must be consistent or in conformance.
- Economic Conditions – Mr. Smitherman reported that the economic conditions were well-covered by TMWA’s Draft Water Resources Plan so with TMWA’s permission, the information was used in the Regional Water Plan.
- Laws, Regulations, Decrees, Agreements (Federal, State, Local)
- Source Water Reliability
 - Climate Change and Drought
 - Water Quality
 - Natural and Anthropogenic Influences, Surface Water, Groundwater and Reclaimed Water

Water Management Programs to Protect the Availability and Quality of Water Resources for Municipal and Industrial Use

- Surface Water Programs
 - Truckee River Restoration
 - Watershed-based Water Quality Planning
 - Tributary Watershed Assessment and Stream Surveys
 - Environmental Control and Pre-treatment
 - Coordinated Monitoring Program (MOU)
 - Truckee Meadows Regional Storm Water Quality Management Program
- Groundwater Programs
 - Groundwater Recharge
 - Wellhead Protection Plans
 - Central Truckee Meadows Remediation District and Other Contaminated Sites
 - Municipal Well Siting
 - Groundwater Resources Data Center and Domestic Well Mitigation
- Other Programs
 - Low Impact Development
 - Hill Slope Development
 - Cloud Seeding
 - Public Outreach Programs

Mr. Smitherman invited questions or comments. Commissioner Price referred to a sentence on page 4 of 21 of the Chapter, "...the local governments and water purveyors *will limit such approvals or may take affirmative actions to mitigate the deficits* through mechanisms such as artificial recharge and recovery of groundwater, conjunctive use of available resources, or the use of alternative water resources." He suggested that "will limit such approvals" be worded more strongly, such as, "will not get approved" or that "the developer would have to bring water". He reiterated that purveyors would not approve development if water is not available. Mr. Smitherman agreed to review the wording.

Commissioner Ball referred to page 6 and the reference to, "...will show over *50,000 acre-feet* of Truckee River mainstem rights are potentially available for dedication to TMWA...". He stated that the number is critical and asked if the number has already been developed or how it would be developed. He asked if the number refers to the number of water rights that have not been dedicated to municipal and industrial (M&I) purposes. Mr. Smitherman clarified that the number would be developed in the next chapter. He added that the number is based on the remaining, uncommitted water rights according to the Orr Ditch Decree that have not been committed to M&I service. Commissioner Ball referred to water rights committed to the South Truckee Meadows, which provide recharge in addition to irrigation. He stated that those uses and concerns need to be reflected in the "available" number. Mr. Smitherman agreed that is a good point that needs to be spread across all the estimates.

Commissioner DeMartini asked if it is visualized that at the end of the approval process, every property in the County could be built and have water. Mr. Smitherman stated that he does not envision the Water Plan as controlling land use zoning; however, the purpose of baseline planning is to estimate a 20-year level of land use with respect to water availability on a sustainable level.

Commissioner Menard stated it is important to keep in mind that the process is based on matching a planning number (which is 20 years out and a moving number). She added that it does not change the fact that in order to get a map approved for development, water rights must be available.

Chairman Seidel called for further questions or input from Commissioners. Mr. Smitherman reported that

the appropriate action for this item would be to provide direction to staff if desired.

Commissioner Price suggested making some wording change recommendations prior to presentation to the Western Regional Water Commission (WRWC). He reiterated his previous recommendation to strengthen the language in the paragraph on page 4 and added that the revision should be distributed to WRWC members. Mr. Smitherman stated that he would mention the recommendations from today's meeting. Mr. Rhodes stated that the actual wording changes are not necessary for the meeting on January 8, 2010, although the comments would be relayed to the WRWC. He added that the new chapter is a work in progress and it is not intended to be approved at this point.

Commissioner Menard reiterated that this chapter on sustainability is being developed based on the Washoe County Ballot Question 3 (WC-3) and the request to plan for population that can be sustained by long-term resources. She added that this first draft is to begin the process, which will move forward to the public.

6. Status report on development of the 2011 Comprehensive Regional Water Management Plan, including outline, timeline and contractual services, and possible direction to staff.

Mr. Smitherman gave a brief overview of the staff report, which included:

- As required by statute, staff solicited information from water purveyors within the planning area for documentation related to their operations and facility plans. Based on new and existing information staff has developed a preliminary draft of Chapter 2 – Water Resources for the 2011 plan for the commission's review. This item was presented at today's meeting.
- Staff has begun assembling information for Chapter 3 - Water Purveyors and Chapter 4 - Wastewater. Review drafts of these chapters are anticipated to be completed within first quarter of 2010.
- In coordination with the Truckee Meadows Flood Management Project, staff has developed a revised outline for the Flood Project section of Chapter 5 - Background on Flood Control /Storm Drainage. The development of this chapter remains on-schedule for the second quarter of 2010. Mr. Smitherman reported that this update is expected to be completed by the end of March.
- Staff has negotiated a scope of work with Washoe County Department of Water Resources to provide GIS services related to the production of maps and figures for the plan. The approved budget, not to exceed \$17,000, is for up to 200 labor hours which is based on the time expenditure for the development of the 2004 – 2025 RWMP. Commissioner Price asked if the proposed TMWA/DWR integration would impact any of the senior GIS staff that might work on this project. Commissioner Menard stated that it would not impact the work to be done.
- Staff has negotiated a scope of work and budget, not to exceed \$49,000, for ECO:LOGIC Engineers to provide engineering services to revise facility cost estimates, revise a regional water balance using current population estimates and provide a regional wastewater analysis. The contract will provide for work products to satisfy several legislatively required elements of the RWMP. Mr. Smitherman stated that the scope of work was approved by the NNWPC at the last meeting, although the scope was still being finalized at that time. He stated that the final scope was included in the agenda packets and would also be provided to the WRWC for approval.

Mr. Smitherman reported that ECO:LOGIC would work with staff from the different entities on regional wastewater and reclaimed water facility plans. He added that there is a lot of information available that will be utilized by the consultant.

Commissioner Price asked for clarification of ECO:LOGIC's role. Mr. Smitherman stated that in past planning efforts, a consultant has been hired to mesh facility plans that were not necessarily developed in coordination with one another. The current plan is for the entities to work together to make the best use of facilities that are being planned. Commissioner Price stated that years ago Carollo Engineers provided very good data on expansion of the area treatment plants and

encouraged ECO:LOGIC to utilize the information. Chairman Seidel agreed that it is important to use existing information where available. Commissioner DeMartini asked if it would be appropriate to hear from the consultant. John Enloe, ECO:LOGIC, confirmed that he has previous information available.

7. Program Manager's Report

Mr. Smitherman reported that he included updates on the following topics as requested or that he thought would be of interest to Commissioners. He stated that the purpose of this agenda item is for Commissioners to review the information included in the agenda packets and feel free to ask questions, make comments, or request additional information.

a. Status Report of Projects and Work Plan supported by the Regional Water Management Fund

The updated Status Report of Projects was provided in the agenda packets. Commissioner Ball asked when it would be appropriate to schedule updates on the Total Maximum Daily Load (TMDL) projects. Commissioner Menard suggested scheduling updates in March or April.

b. Financial report on the Regional Water Management Fund

The Financial Report on the Regional Water Management Fund was provided in the agenda packets.

c. Truckee River Flood Management Project status report

Mr. Smitherman reported that a status update on the Truckee River Flood Project was included as an informational item.

d. Informational report from the NNWPC representative on the Truckee Meadows Water Authority Standing Advisory Committee (SAC)

Mr. Smitherman reported that there was no SAC meeting so no update was included.

8. Discussion and possible direction to staff regarding agenda items for the February 3, 2010, Commission meeting and future meetings.

Mr. Smitherman stated that the next regularly scheduled NNWPC meeting would be February 3, 2010. Agenda items for the meeting include:

- Status Report on "State of the Science" for the Central Truckee Meadows (Groundwater) Remediation District, Chris Benedict, Washoe County Department of Water Resources
- Program Manager's Report, Jim Smitherman
 - Status Report of Projects and Work Plan supported by the Regional Water Management Fund
 - Financial report on the Regional Water Management Fund
 - Status report on possible integration/consolidation of the Washoe County Department of Water Resources and the Truckee Meadows Water Authority
 - Truckee River Flood Management Project status report
 - Informational report from the NNWPC representative on the Truckee Meadows Water Authority Standing Advisory Committee
- Discussion and possible direction to staff regarding agenda items for the March, 3 2010, Commission meeting and future meetings, Jim Smitherman
- Other Informational Items

Commissioner Menard reported that if desired, the items could be postponed to the March meeting and the February meeting could be cancelled.

Commissioner Price stated that he would like to see updates on the website and the Legislative Oversight Committee; however, he added that they were not time sensitive issues.

Commissioner Erwin made a motion to cancel the February meeting. Commissioner Menard seconded the motion, which carried unanimously.

Mr. Smitherman clarified that the March 3, 2010 meeting would be scheduled at the Washoe County Commission Chambers at 1:30 p.m.

9. Commission Comments.

Commissioner Ball expressed his appreciation and complimented staff on the work done on the new Chapter 2 related to water sustainability.

10. Staff Comments.

None.

11. Public Comments.

Chairman Seidel called for public comments and hearing none, closed the public comment period.

12. Adjournment.

With no further business, the meeting was adjourned at 2:24 p.m.

Respectfully submitted by,

Niki Linn, Recording Secretary

Approved by Commission in session on _____ 2010.

Wayne Seidel, Chairman

Northern Nevada Water Planning Commission

STAFF REPORT

DATE: March 24, 2010
TO: Chairman and Members, Northern Nevada Water Planning Commission
FROM: Jim Smitherman, Water Resources Program Manager
SUBJECT: Discussion and recommendation to the Western Regional Water Commission (“WRWC”) regarding comparison of the draft Washoe County consensus population forecast for 2030 and the estimated population that can be supported by the sustainable water resources as set forth in the Comprehensive Regional Water Management Plan

SUMMARY

In January 2010, the Regional Planning Governing Board (“RPGB”) adopted certain amendments to the Truckee Meadows Regional Plan (“Regional Plan”), and the RPGB Regulations on Procedure, designating the Northern Nevada Water Planning Commission (“NNWPC”) and the Western Regional Water Commission (“WRWC”) as the entities to perform a comparison of the draft Washoe County consensus population forecast (“Consensus Forecast”) and the estimated population that can be supported by the sustainable water resources as set forth in the Comprehensive Regional Water Management Plan (“RWMP”) prior to the adoption of the Consensus Forecast. (See Attachment A, Revisions to the Regional Plan and RPGB Regulations on Procedure.)

According to the amended RPGB Regulations on Procedure, the NNWPC, at its first scheduled meeting in April, will compare the draft Consensus Forecast with the estimated population that can be supported by the sustainable water resources as set forth in the RWMP and advance a recommendation to the WRWC. The WRWC will then make a determination based on the NNWPC’s recommendation concerning the comparison described above and inform Reno, Sparks, Washoe County, and the Truckee Meadows Regional Planning Agency (“TMRPA”) as to its finding by April 20. In addition, the RPGB Regulations on Procedure state that if the WRWC determines the draft Consensus Forecast is less than or equal to the estimated population that can be supported by the sustainable water resources identified in the RWMP, the WRWC will submit the draft Consensus Forecast to Reno, Sparks, Washoe County, and TMRPA by May 1 with a finding that the forecasted population can be supported by the sustainable water resources as set forth in the RWMP.

Washoe County has provided a draft Consensus Forecast population figure of 590,533 for the year 2030 (Attachment B). Staff has prepared the Water Resources Baseline Table (Attachment C) for the RWMP due in January 2011, which identifies estimated sustainable water resources of approximately 183,200 acre feet per year. In addition, the Truckee Meadows Water Authority (“TMWA”) has prepared population and water demand projections using the draft Consensus

Forecast figures. TMWA's water demand model projects a need of approximately 142,000 acre-feet to serve the Consensus Forecast 2030 population.

DISCUSSION

Draft Consensus Forecast

Washoe County Department of Community Development provided the draft Consensus Forecast population in February 2010. The population was compiled using data from TMWA, Global Insight, Woods and Poole, and the State Demographer. The draft Consensus Forecast population for 2030 is 590,533, which is 29,790 less than the 2008 Consensus Forecast population for 2030.

Water Resources

The Water Resources Baseline Table provides long-range planning-level estimates for water resources considered to be sustainable using the best available information. The table identifies selected hydrographic basins within the region and quantifies surface water and groundwater in two ways. Appropriations (water rights), including decreed rights and rights permitted or certificated by the State Engineer for municipal and industrial ("M&I") use and those that may be converted to M&I use, are quantified separately from those that cannot be converted to M&I use. The table acknowledges the Truckee River Operating Agreement's effect on the availability and sustainability of Truckee River water. The table also shows the quantity of groundwater in each basin consistent with the State Engineer's estimates of perennial yield. In basins where appropriations for M&I use, or those that may be converted to M&I use, are less than the perennial yield estimate, only those water rights actually appropriated are considered to be sustainable. The table includes basins that may provide M&I water supplies within a 20-year planning timeframe.

Water Demand and Population Projections

TMWA has developed a three-step process to produce a long-range water demand projection for the entire County. The first step was to develop a population projection model based on the fitting of a logistic curve model to past population, and then create a projection of that population to the year 2050. The second step was to develop a countywide inventory of buildings, and then create a projection of new residential dwelling units and commercial buildings as a function of population. The third step was to estimate water demand as a function of building inventories and historic water use coefficients.

The results of steps one and two show that the models fit the historic data well and that the projected values follow a reasonable trend. The projected trend for persons per dwelling unit and persons per developed acre show that the projection will meet the land and building needs of the projected population. TMWA's methodology is published in its *2010-2030 Water Resource Plan, Appendix I*.

TMWA assisted the NNWPC and the WRWC by re-running its model using the draft Consensus Forecast population and producing the building inventory and water demand projections presented in Attachment D.

CONCLUSIONS

The model projects a water demand of approximately 142,000 acre feet to support a population of approximately 590,500 as projected for the year 2030 by the draft Consensus Forecast. Therefore, the estimated sustainable water resources of approximately 183,200 acre feet per year are more than adequate to serve the draft Consensus Forecast population for 2030. The model results further show that the estimated population that can be supported by the sustainable water resources is approximately 741,000.

PREVIOUS ACTION

None

BACKGROUND

In response to Washoe County voters' concerns that the Regional Plan did not contain policies requiring that local government land use-plans be based upon and in balance with identified and sustainable water resources available within Washoe County, the Washoe County Board of Commissioners ("BCC") in October 2009, proposed certain amendments to the Regional Plan, which were adopted by the RPGB in January 2010. The amendments provide for a comparison between the draft Consensus Forecast and the estimated population that can be supported by the sustainable water resources as identified in the RWMP. The BCC further proposed, and the RPBG adopted, amendments to the RPGB's Regulations on Procedure to designate the NNWPC and the WRWC as the entities to perform a comparison prior to the Regional Planning Commission's ("RPC") adoption of the draft Consensus Forecast, with the WRWC to make a determination and finding as to whether the forecasted population can be supported by the sustainable water resources as set forth in the RWMP. According to the amended RPGB Regulations on Procedure, if the draft Consensus Forecast is found to be less than or equal to the estimated population that can be supported by the sustainable water resources in the RWMP, the Consensus Forecast is finalized and presented to the RPC for adoption. Once adopted, the final Consensus Forecast is incorporated into the Regional Plan and all local government land use plans must conform to the provisions of the Regional Plan.

FISCAL IMPACT

None

RECOMMENDATION

It is recommended that the NNWPC review this report and recommend to the WRWC that it make a determination that the draft Consensus Forecast population for 2030 is less than the estimated population that can be supported by the sustainable water resources identified in the RWMP.

JS:jd

Attachments



REGIONAL PLANNING GOVERNING BOARD

MEMBERS

John Breternitz, Chair	Dwight Dortch
Ron Schmitt, Vice-Chair	Pierre Hascheff
Dave Aiazzi	Robert Larkin
Mike Carrigan	Geno Martini
Robert A. Cashell	Bonnie Weber
Rosanna Coombes, Director	
LIAISON - Dan Carne, WCSD Board of Trustees	

STAFF REPORT

RPGB Meeting – January 14, 2010

December 29, 2009

TO: Regional Planning Governing Board

FROM: Peter Gower, AICP, Senior Planner

SUBJECT: PUBLIC HEARING - Regional Plan Amendment (RPA 09-022) Consideration and possible action to adopt a resolution (RPGB 10-03) regarding an amendment to the 2007 Regional Plan to implement Washoe County Question #3, which calls for the Regional Plan to be amended to reflect and to include policy or policies requiring that local government master plans be based upon and in balance with identified and sustainable water resources available within Washoe County; and consideration and possible action to adopt amendments to Section XII of the *RPGB Regulations on Procedure* to clarify that the Consensus Forecast is to be compared with the estimated population that can be supported by the sustainable water resources as identified in the Regional Water Management Plan (AGENDA ITEMS 6.D.1 & 2)

This staff report provides background information and analysis for the Regional Planning Governing Board's (RPGB) consideration of proposed amendments to the 2007 Regional Plan and *RPGB Regulations on Procedure*. These amendments are intended to implement Washoe County Question #3 and describe a process for comparing the Consensus Forecast with the population that can be supported by the sustainable water resources identified in the Regional Water Management Plan (RWMP).

BACKGROUND

In July 2008, the Washoe County Registrar of Voters certified an initiative petition titled "Save Our Water." On November 4, 2008, Washoe County Ballot Question WC #3 passed by a margin of 73% in favor and 26% against with 121,555 voters cast votes in favor. The question read: "*Shall the Truckee Meadows Regional Plan be amended to reflect and to include a policy or policies requiring that local government land use plans be based upon and in balance with identified and sustainable water resources available within Washoe County?*"

At the January 2009, RPGB meeting, Regional Planning staff presented the RPGB with an action plan for addressing the passage of WC#3. However, due to the introduction of new legislation for

the 2009 Nevada Legislative Session, which mirrored the initiative language in many ways, the RPGB directed staff to postpone any work on the proposed action plan.

At the June 11, 2009, RPGB meeting, staff informed the Board of the failed passage of the assembly bill that was intended to implement WC#3 and requested direction regarding a process to implement WC#3.

Subsequently, at the August 13, 2009, RPGB meeting, in response to the RPGB's direction at the June 2009, meeting, staff presented a range of options for moving forward with the implementation of WC#3.

The RPGB selected the option to refer the sponsorship of a Regional Plan amendment for the implementation of WC#3 to the Washoe County Board of County Commissioners (BCC).

On October 27, 2009, the Washoe County BCC voted unanimously to authorize the BCC Chairman to execute a resolution (see *attachment 1*) for the sponsorship of a Regional Plan amendment that implements Washoe County Question #3, and a recommendation that the *RPGB Regulations on Procedure* be amended to provide a process by which the Consensus Forecast population can be compared to the population that can be supported by the sustainable water resources identified in the RWMP.

The Regional Planning Commission (RPC) voted unanimously on December 9, 2009, to recommend to the RPGB adoption of the proposed amendments to the Regional Plan and *RPGB Regulations on Procedure*.

PROPOSED REGIONAL PLAN AMENDMENTS

The proposed amendment currently before the RPGB (RPA 09-022) amends several sections of the 2007 Regional Plan - version 8, to address the implementation of Washoe County Question #3. Specifically, this amendment proposes the addition of new language in the Introduction and Module 1 of the Regional Plan.

In the Introduction, new language under the Roles and Responsibilities of the RPC clarifies the responsibility of the RPC to oversee a process for conducting and maintaining a regional population forecast that is consistent with the estimated population that can be supported by the sustainable water resources identified in the RWMP.

Also in the Introduction, new language within the section titled "Relationship to Other Plans," describes a new process by which the Northern Nevada Water Planning Commission (NNWPC) and Western Regional Water Commission (WRWC) are to compare the Consensus Forecast population to the population that can be supported by the sustainable water resources identified in the RWMP and advance a finding to the RPC. This process is to be carried out pursuant to the *RPGB Regulations on Procedure*, which are also proposed to be amended to reflect this process (see *attachment 2*).

On page 1 of Module 1, a new bullet statement will emphasize that the forecasted regional population is consistent with the estimated population that can be supported by the sustainable water resources identified in the RWMP is one of several important objectives to be achieved by the goals and policies in Module 1.

Finally, Policy 1.1.1 will be amended to: 1) require the RPC to adopt a Consensus Forecast that is consistent with the estimated population that can be supported by the sustainable water resources identified in the RWMP, and 2) require that a comparison with the estimated population that can be supported by the sustainable water resources as identified in the RWMP be included as part of the process for updating and maintaining the adopted Consensus Forecast as specified in the *RPGGB Regulations on Procedure*, section XII.

Accordingly, regional planning staff recommend the following Regional Plan amendments to implement WC#3. All text additions are shown in blue, *italics*, underlined.

Text Changes to Introduction - Page 3:

ROLES & RESPONSIBILITIES

The roles and responsibilities are delineated in NRS. Each of the following sections summarizes the roles and responsibilities of each of the entities in regards to the Regional Plan.

Regional Planning Commission (RPC)

The RPC has nine members, appointed by their respective governing bodies, including three each from the Reno, Sparks, and Washoe County local planning commissions. The members serve three-year terms and may be re-appointed. The RPC elects a chairperson from among its members to a one-year term, which rotates annually among the three jurisdictions.

NRS 278.0272 directs the RPC to develop a comprehensive Regional Plan for physical development and orderly management of growth in the Region for the next 20 years and hold public hearings. The statute also directs the RPC to review the plan annually, update it not less than every five years and forward its recommendations to the RPGGB for final adoption.

One of the functions of the RPC is to review Projects of Regional Significance (PRS). The RPC adopts guidelines for determining whether a particular project is a PRS and, before a city or the County gives final approval to a PRS, must find it in conformance with the Regional Plan.

The RPC also reviews master plans, facilities plans, and other similar plans of local governments and affected entities to determine whether they conform to the Regional Plan. In addition, the RPC reviews plans and plan amendments of state agencies and of public utilities regulated by the Public Utilities Commission of Nevada (PUCN) and offers suggestions regarding their conformance with the Regional Plan. The RPC also reviews for conformance the transportation plan prepared by the Regional Transportation Commission and for consistency the water plan prepared by the Northern Nevada Water Planning Commission. Finally, by interlocal agreement, the RPC serves as the annexation commission for involuntary annexation proposals in the region.

Pursuant to the RPGM Regulations on Procedure, the RPC shall oversee processes for conducting and maintaining a regional population forecast for conformance review, and TMSA allocation. The adopted regional population forecast must be consistent with the estimated population that can be supported by the sustainable water resources identified in the Regional Water Management Plan.

[Amended 9/11/08; Amended 1/15/09, Amended xx/xx/xx]

Text Changes to Introduction - Pages 4-5:

RELATIONSHIP TO OTHER PLANS

As described in Chapter 278 of the Nevada Revised Statutes (NRS) the master plans, facilities plans, and other similar plans of local governments and affected entities must be found in conformance with the comprehensive Regional Plan.

In addition to the Truckee Meadows Regional Planning Agency, two other entities within the region are designated with planning for region-wide facilities, infrastructure or resources; the Northern Nevada Water Planning Commission, and the Regional Transportation Commission.

[Amended 9/11/08]

Regional Water Planning

The Northern Nevada Water Planning Commission (NNWPC) established pursuant to Chapter 531 Statutes of Nevada 2007 of the Nevada Special Acts is required to develop a plan for:

- quality of surface water
- quality of groundwater
- supply of surface water
- supply of underground water
- control of floods and drainage of storm water, as it relates to surface water
- control of floods and drainage of storm water, as it relates to underground water
- cost and financing related to facilities, sources of water, or other requirements of the plan

Chapter 531 Statutes of Nevada 2007 requires that the Regional Water Management Plan (RWMP), developed by the NNWPC and adopted by the Western Regional Water Commission, must also be found to be consistent with the comprehensive Regional Plan. For goals and policies related to these topics please see the adopted Washoe County Regional Water Management Plan.

[Amended 9/11/08]

For the purpose of determining consistency, the RPC shall utilize the adopted conformance review methodology pursuant to the conformance policies contained in the Regional Plan.

[Amended 1/15/09]

Pursuant to the RPGM Regulations on Procedure that establish processes for conducting and maintaining a regional population forecast for conformance review and TMSA allocation, the NNWPC and WRWC will make findings, and forward those findings to the RPC, regarding comparison of the regional population forecast to the population estimate that can be supported by the sustainable water resources identified in the RWMP.

[Amended xx/xx/xx]

Text Changes to Module 1 - Page 1:

MODULE #1:

REGIONAL FORM AND DEVELOPMENT PATTERNS

INTRODUCTION

The goals and policies associated with Module #1, along with related goals and policies listed under the other modules, will address a number of the following important objectives within the Truckee Meadows region:

- Promote sustainable growth and efficient growth patterns through a defined area within which municipal services and infrastructure will be provided;
- Ensure that the population forecast prescribed in the Regional Plan is consistent with the estimated population that can be supported by the sustainable water resources as identified in the Regional Water Management Plan; [Amended xx/xx/xx]

Text Changes to Goal 1.1 in Module 1 - Page 9 :

GOAL 1.1

Between 2007 and 2030, at least 99% of the region's population growth and 99% of the region's jobs growth will be located in the Truckee Meadows Service Areas (TMSA).

Policy 1.1.1

To conform with the Regional Plan, the master plans, facilities plans, and other similar plans of local governments and affected entities must utilize the adopted Consensus Forecast for determining future regional population estimates for the formulation of goals, policies, and service plans. [Amended xx/xx/xx]

The Regional Plan recognizes that some affected entities due to service area size or targeted services need to utilize additional or supplementary population data. If these affected entities utilize additional or supplementary population data, the source and methodology must be clearly described in master plans, facilities plans, and other similar plans. These plans must clearly relate back to the adopted Consensus Forecast.

The RPC shall adopt a Consensus Forecast that is consistent with the estimated population that can be supported by the sustainable water resources as identified in the Regional Water Management Plan. [Amended xx/xx/xx]

The adopted *RPGB Regulations on Procedure*, section XII, shall be used to update and maintain the Consensus Forecast including *comparison with the estimated population that can be supported by the sustainable water resources as identified in the Regional Water Management Plan*, jurisdictional splits and the allocation of population to smaller geographic units of the region.

[Amended 12/13/07; *Amended xx/xx/xx*]

In addition to the proposed Regional Plan amendments, Section XII of the *RPGB Regulations on Procedure* will be amended to include a process for comparing the Consensus Forecast to the estimated population that can be supported by the sustainable water resources identified in the RWMP. The amendments to the *RPGB Regulations on Procedure* are provided as **attachment 2**. Text additions are shown in blue *underlined italics* and text subtractions are shown in red ~~strikethrough~~.

Collectively, these amendments to the Regional Plan and *RPGB Regulation on Procedure* are intended to implement Washoe County Question #3 as approved by voters in November 2008.

DISCUSSION AND ANALYSIS

The RPGB is required to consider Policy 4.3.6 when considering an amendment to the Regional Plan.

Policy 4.3.6

The Regional Planning Commission and Regional Planning Governing Board shall consider, at a minimum, the following criteria during consideration of a proposed amendment to the Regional Plan pursuant to NRS 278.0272:

1. Regional form and pattern, including open space;
2. Housing;
3. Jobs/housing balance;
4. Availability, timing and phasing of infrastructure;
5. Public service levels and fiscal impacts; and
6. Natural resource constraints.

Regional Planning staff have reviewed the criteria in Policy 4.3.6 and offer the following comments:

- **Regional form and pattern, including open space:** The proposed amendment is not anticipated to affect regional form and pattern. As described in the proposed amendments to the *RPGB Regulations on Procedure*, one possible outcome of the comparison of the Consensus Forecast population to the population that can be supported by the sustainable water resources identified in the RWMP is the RPC initiation of a Regional Plan amendment to address regional form and pattern. However, in no way is the current amendment intended to affect regional form and pattern.
- **Housing:** The proposed amendments will not affect housing.
- **Jobs/Housing balance:** This amendment proposes no impact to jobs/housing balance.
- **Availability, timing and phasing of infrastructure:** The proposed amendment will not have an affect on the availability, timing or phasing of infrastructure.

- **Public service levels and fiscal impacts:** The proposed amendment will neither affect public service provision nor result in any fiscal impacts.
- **Natural resource constraints:** The proposed amendments reinforce existing Regional Plan objectives intended to preserve and sustain the region's water resources.

VOTING REQUIREMENTS

Pursuant to NRS 278.0276, the adoption of an amendment to the Regional Plan must be by resolution of the governing board carried by a simple majority of its total membership. Therefore, six (6) affirmative votes will be required to adopt the proposed Regional Plan amendment.

RECOMMENDATION

Staff recommend the RPGB consider the Regional Plan amendments described in this staff report and approve RPGB Resolution 10-03 (*Attachment 3*) to adopt the proposed amendments.

Recommended Motion:

I move to approve RPGB Resolution 10-03 to adopt amendments to the 2007 Regional Plan and *RPGB Regulations on Procedure* that implement Washoe County Question #3.

Please do not hesitate to contact Peter Gower at 775/321-8391 if you have any questions or comments on this agenda item.

Attachment #1 - Washoe County Resolution

Attachment #2 - Amendments to the RPGB Regulations on Procedure

Attachment #3 - RPGB Resolution 10-03

TRUCKEE MEADOWS REGIONAL PLANNING AGENCY

REGIONAL PLANNING GOVERNING BOARD REGULATIONS ON PROCEDURE

Adopted November 14, 2002
Amended February 12, 2004
Amended February 10, 2005
Amended February 9, 2006
Amended July 19, 2007
Amended September 13, 2007
Amended November 8, 2007
[Amended January XX, 2010](#)
~~*(Version 10)*~~ [\(Version 11\)](#)



TRUCKEE MEADOWS REGIONAL PLANNING AGENCY

REGIONAL PLANNING GOVERNING BOARD REGULATIONS ON PROCEDURE

TABLE OF CONTENTS

Section:	Title:	Page:
I.	Coordination of activities between the Regional Planning Governing Board and the Regional Planning Commission	2
II.A	Regional Plan Amendments	4
II.B	Private property owner requests to amend the comprehensive regional plan with respect to changing the Truckee Meadows Service Areas (TMSA) and Future Service Areas (FSA) boundaries	5
III.	Conformance reviews: Projects of Regional Significance	9
IV.	Conformance reviews: Master Plans, Facilities Plans and other similar plans	11
V.	Joint planning areas	14
VI.	Procedure and practice before the Regional Planning Commission (RPC) and the Regional Planning Governing Board (RPGGB) on the topic of cooperative planning	15
VII.	Annexation programs	22
VIII.	Annexation proposals	24
IX.	Annual reports	26
X.	Legislation and projects relating to the Regional Plan	27
XI.	Electronic delivery of agenda and supporting materials	28
XII.	Population forecasting	30
Schedules:		
1.	Fees - Private property owner requests to amend the TMSA and FSA	33
2.	History of changed regulations	34

XII. POPULATION FORECASTING

1. Applicability. The purpose of these rules is to establish processes for conducting and maintaining a regional population forecast for conformance review and Truckee Meadows Services Area allocation. These rules outline major components in the preparation and maintenance of a locally developed consensus population forecast, and describe a process that requires the consensus forecast to be compared against the estimated population that can be supported by the sustainable water resources in the region, and consider an alternative methodology if the consensus population forecast is not maintained according to the agreement or exceeds the estimated population that can be supported by sustainable water resources in the region.

- ~~2. 2008 Interim data for forecasting. Until the process established in Section 3 or 4 below is completed the following table will be utilized for population forecasting:~~

	Population forecast horizon[†] (year)	Population forecast by jurisdiction to the horizon-year[†] (# people)
Reno	2030	319,200
Sparks	2030	133,600
Unincorporated Washoe County	2020	118,800

[†]Population horizons and forecasts for each jurisdiction are based on the last conforming master plan

2. Establishment of a regional population forecast based on water sustainability
 - a. As illustrated in Figure 1 and outlined in the following sections, the Regional Plan and these Regulations on Procedure dictate the procedures for developing, updating, and utilizing a regional population forecast. The Regional Water Management Plan (RWMP) identifies the quantity of sustainable water resources and an estimate of the future population that can be supported by the sustainable water resources.

3. Development of the draft/updated consensus forecast. The method for the development of the draft consensus forecast is described below:
 - a. The data sets that will be used for the consensus forecast shall be the most current published or available data from: the State Demographer, Woods & Poole, Global Insight, NPA Data Sources and Truckee Meadows Water Authority (TMWA), and shall not be more than two (2) years old at the time the information is used to derive the population forecast.

-
- b. The County shall collect or purchase the data and prepare a preliminary consensus forecast for distribution to Reno, Sparks, and TMRPA by January 15th of even numbered years for review and comment, including at a minimum conducting one (1) collaborative meeting of all parties.
 - c. The County will prepare a draft county-wide forecast for distribution and comment to Reno, Sparks, and TMRPA, by February 1st of even numbered years.
 - d. *This forecast shall then be forwarded to the Northern Nevada Water Planning Commission (NNWPC) by March 1st.*
4. Alternative to the consensus forecast. *In the event Washoe County does not complete a draft/updated consensus forecast document according to the procedures in Section 3.a-c, the following describes the process is to be used instead. if Section 34 has not been completed.*
- a. If the draft/updated consensus forecast has not been submitted to Reno, Sparks, and TMRPA by February 1st of an even numbered year, ~~the RPC for adoption~~ as described in Section 3, above, the Regional Planning Commission (RPC) may adopt and utilize the most current, published State Demographer's Forecast data when exercising its duties under NRS and the Regional Plan.
 - ~~b. As the State Demographer only produces a county wide population forecast, the following methods will be used to develop jurisdictional splits to be applied to the State Demographer's forecast.~~
 - ~~i. If a previous consensus forecast, developed pursuant to section 35.d.i., above, established jurisdictional splits approved by all local governments and TMRPA, it will continue to be used for the first alternate forecast.~~
 - ~~ii. If no previous consensus forecast has established jurisdictional splits, as described in section 45.b.e.i, or if it appears for a second consecutive forecast period that the alternate forecast will be used, then the RPC may choose to develop a method and implementation plan for jurisdictional splits. The TMRPA shall convene a staff team, made up of at least one member from each jurisdiction and the TMRPA, to advise the RPC on this process.~~
 - c. *The State Demographer's Forecast shall be acquired by Washoe County and forwarded to Reno, Sparks and TMRPA forecast for distribution and comment. This alternative forecast shall be used in place of the consensus forecast.*
 - d. *The Demographer's forecast shall then be forwarded to the NNWPC by March 1st.*
5. *Comparison of draft consensus forecast population or Demographer's population forecast (hereinafter referred to interchangeably as "population forecast") with estimated population that can be supported by sustainable water resources.*

-
- a. At its first scheduled meeting in April, the NNWPC shall compare the draft population forecast with the estimated population that can be supported by the sustainable water resources as set forth in the RWMP. The NNWPC shall advance a recommendation to the Western Regional Water Commission (WRWC), which will be considered at the first WRWC meeting in April.
 - b. The WRWC shall compare the draft population forecast with the estimated population that can be supported by the sustainable water resources as identified in the RWMP and make a final determination as to whether the draft population forecast can be supported by the sustainable water resources set forth in the RWMP.
 - i. If the WRWC determines the draft population forecast is less than or equal to the estimated population that can be supported by the sustainable water resources identified in the RWMP, the process will proceed according to Section 6, below.
 - ii. If the WRWC determines the draft population forecast is greater than the estimated population that can be supported by the sustainable water resources identified in the RWMP, the process will proceed according to Section 7, below
 - c. Regardless of the finding made by the WRWC in Section 5.b, the WRWC shall inform Reno, Sparks, Washoe County, and TMRPA as to its finding by April 20.
6. Population forecast is less than or equal to the estimated population that can be supported by the sustainable water resources in the RWMP
- a. If the WRWC determines the draft population forecast is less than or equal to the estimated population that can be supported by the sustainable water resources identified in the RWMP, the WRWC will submit the draft population forecast to Reno, Sparks, Washoe County, and TMRPA by May 1 with a finding that the forecasted population can be supported by the sustainable water resources as set forth in the RWMP.
 - b. The process for preparing jurisdictional splits will proceed according to Section 8, below.
7. Population forecast is greater than the estimated population that can be supported by the sustainable water resources in the RWMP. If the WRWC determines the draft population forecast is greater than the estimated population that can be supported by the sustainable water resources identified in the RWMP:
- a. The WRWC shall inform Reno, Sparks, Washoe County, and TMRPA of its finding and the magnitude of the difference by May 1, and may initiate an investigation to determine whether the regional population able to be supported by the sustainable water resources identified in the RWMP can be increased through the reduction in per capita consumption or an increase in the available supply of water resources or by other technically appropriate means.

-
- b. The results of the investigation may be considered by the NNWPC and forwarded with a recommendation to the WRWC
 - c. The WRWC may review the results of the investigation and the recommendation from the NNWPC and issue one of the following findings:
 - i. The population that can be supported by sustainable water resources should be increased based on the results of the investigation; or
 - ii. There are no opportunities to increase the sustainable water resources or reduce the per capita water demand.
 - d. In the case of 7.c.i. above, the WRWC may initiate an amendment to the RWMP. The amended population that can be supported by sustainable water resources will then be compared with the most recent population forecast according to the process described in Section 5.
 - i. In the event that a new population forecast is being developed and is imminent at the time the RWMP is amended to reflect the revised population that can be supported by water resources, the NNWPC and WRWC shall wait until receipt of the latest population forecast to perform the comparison specified in Section 5.
 - e. In the case of 7.c.ii above, the WRWC shall advance a finding to the RPC for consideration; in which case the RPC shall:
 - i. Consider a motion to retain the existing population forecast or return the population forecast as constrained by available sustainable water resources to Reno, Sparks, Washoe County, and TMRPA by June 1 for preparation of a final population forecast with jurisdictional splits per Section 8 below; and/or
 - ii. Based on the recommendation received from the WRWC, consider the initiation of a process to amend the Regional Plan.

8. Preparation of a final consensus forecast with jurisdictional splits.

- a. The draft population forecast shall be used by Washoe County in conjunction with Reno, Sparks and TMRPA to prepare jurisdictional splits of the regional forecasted population. ~~Prior to submission final adoption to by the RPC, The final county-wide consensus population forecast must include including jurisdictional splits shall be developed in the based on one of~~ the following manner:
 - i. To develop a method and implementation plan for jurisdictional splits the TMRPA shall convene a staff team made up of at least one member from each jurisdiction and the TMRPA. Once consensus has been reached the method and implementation plan shall be reviewed and approved by each local jurisdiction and TMRPA.

- b. The method established in 83.d.a.i shall be reviewed, and potentially modified by May March 1 of even numbered years in conjunction with each update of the consensus forecast.
- c. The final population forecast with jurisdictional splits will be prepared within four (4) weeks and submitted to the RPC for final adoption ~~by April 1 in even numbered years. If the draft forecast is not received by the RPC by the due date, the RPC may consider adoption of an alternative population forecast as described in Section 4.~~

9. RPC review of final population forecast. The RPC shall review and consider adoption of the final population forecast with jurisdictional splits prepared according to sub-section 8.a above.

- a. The RPC may adopt the population forecast with jurisdictional splits prepared according to sub-section 6.a. In this case, the forecast will contain the same forecasted population as the draft document originally prepared by Washoe County.
- b. The RPC may adopt a population forecast with jurisdictional splits prepared according to sub-section 7.a above and that is modified so as to not exceed the sustainable water resources set forth in the RWMP.
- c. The RPC may decide not to adopt the consensus forecast, in which case the RPC shall state on the record its reasoning for not adopting the consensus forecast and may initiate an amendment to the Regional Plan.

10. ~~Establishment of a process to d~~Disaggregation of population ~~by~~ to smaller geographic units.*

The following process shall be used to disaggregate the final population forecast by into small area geographic units, consistent with the goals and policies of the Regional Plan.

- a. Following the adoption of the final population Consensus F forecast by the RPC, TMRPA in conjunction with Reno, Sparks, and Washoe County ~~each local government~~ shall ~~allocate their respective~~ use an agreed upon methodology to disaggregate the population forecast, consistent with the goals and policies of the Regional Plan, to ~~traffic analysis zones (TAZs) provided by Regional Transportation Commission staff~~ small area geographic units.

11. Distribution of disaggregated population data

- a. TMRPA shall make available the disaggregated population data to each local government and affected entity for the purposes of master planning, facilities planning, and other similar planning activities.*
- b. ~~No later than September 1, once the task identified in Section 67.a. is complete, the tabular data and GIS data will be provided to the TMRPA for use in exercising duties outlined in NRS, the Regional Plan, or the RPGB adopted work program.—~~

** Note: Water resources are only evaluated at the county-wide population forecast level and are not disaggregated to sub-jurisdictional planning units.*

-
- c. The TMRPA may aggregate the ~~TAZ-level forecasts~~ small area geographic information to create a forecast for other geographic units for planning or conformance review purposes.

12. Conformance review of local government and affected entity planning documents

- a. The RPC shall conduct reviews of conformance with the Regional Plan consistent with State Law.

13. Maintenance and update of the consensus forecast. The consensus forecast will be prepared by the County every even-numbered year. ~~not less often than every two years, beginning with the next publication in 2008.~~

Decision Tree
Regional Population Forecast based on Water Sustainability

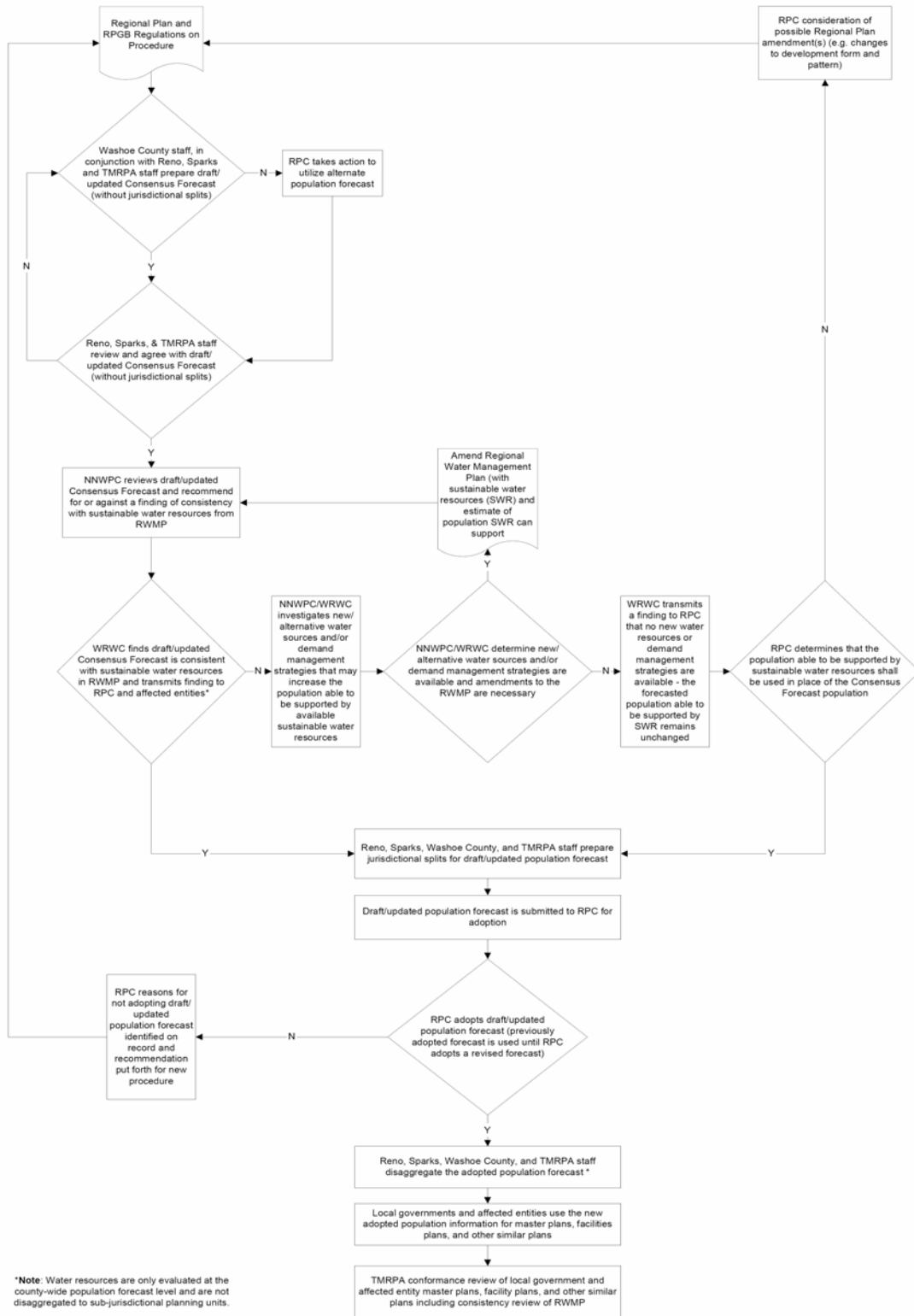


Figure 1: Decision Tree: Regional Population Forecast based on Water Sustainability



Community Development

"Dedicated to Excellence in Public Service"

Adrian P. Freund, FAICP, Community Development Director



January 12, 2010

Subject: Preliminary 2010 Washoe County Consensus Forecast Population Figures.

To Our Partners in the Consensus Forecast:

Washoe County Community Development Department staff has recently obtained population forecast data from Global Insight, Truckee Meadows Water Authority, and Woods and Poole as well as the 2008 State Demographer's Forecast. NPA Data Services is no longer in business and is unavailable as a data source for the 2010 Consensus Forecast. For reference, Figure A below shows the 2008 Washoe County Consensus Forecast population by forecast source (2008 and 2030 figures) while Figure B shows the preliminary 2010 Washoe County population by forecast source (2010 and 2030 figures). Please keep in mind that recent trends can have a significant impact on the 2030 forecast and that individual forecast sources use different methodologies to develop the forecasts (that is part of the richness of the Consensus Forecast approach).

Figure A

2008 Consensus Forecast Population by Forecast Source

Forecast Source	2008 Population	2030 Population
Global Insight	414,900	649,710
NPA Data Services, Inc.	417,440	665,150
Truckee Meadows Water Authority (TMWA)	428,780	625,285
Woods and Poole	408,510	539,220
*2006 State Demographer's Forecast (adjusted)	425,554	622,252
Consensus Forecast (Five Sources)	419,037	620,323

Source: Washoe County, Global Insight, NPA, Woods and Poole, TMWA, and 2006 State Demographer's Forecast (Adjusted).

Figure B

Preliminary 2010 Population by Forecast Source

Forecast Source	2010 Population	2030 Population
Global Insight	426,740	622,660
NPA Data Services (N/A)		
Truckee Meadows Water Authority (TMWA)	440,081	570,511
Woods and Poole	425,927	585,178
*2008 State Demographer's Forecast	445,329	583,781
Consensus Forecast (Four Sources)	434,519	590,533

Source: Washoe County, Global Insight, Woods and Poole, 2008 State Demographer's Forecast (Adjusted) and TMWA.

Letter to:
Subject:
Date:
Page: 2

***Note – The latest version (2009) of the Nevada State Demographer’s Forecast is not available at this time. The number of new persons added for each year 2008 to 2028 was averaged (7,205) and applied to this existing forecast in order to extend the population figures to 2030.**

While adhering to the Truckee Meadows Regional Planning Agency January 15 date of initial discussion of these preliminary Consensus Forecast figures I would like to set up a meeting as soon as possible with all of our partners to discuss these preliminary figures and will be in contact with each of you to organize an acceptable meeting date. If you require any additional information or background material, please contact me, phone: 328.3632, or email: dmorehouse@washoecounty.us.

Sincerely,

Don Morehouse
Planner

Enclosures

xc:

DRAFT

DRAFT
Water Resources Baseline Table

Basin #		Water Rights: Decreed, State Engineer permitted, and/or certificated rights*	Estimated Perennial Yield	Estimated Sustainable Water Resources	Notes	Imported/ (exported) Supplies	Estimated M&I Commitments	Comments	Estimated Existing Domestic Well Allocation ⁽⁹⁾	Description of Water Rights
---a---	---b---	---c---	---d---	---e---		---f---	---g---		---h---	---i---
83	TRACY SEGMENT									
	Perennial Groundwater	8090	11500	8090	(1)		160	C-1	90	State Engineer Ruling 5747 (early 2007) increasing recharge estimate from 6000 afa to 11500 afa under appeal by various parties. Irrigation (670 afa) and Industrial (1,730 afa) water right conversion subject to reduction. Mining and Milling water rights (770 afa) may not be available for conversion.
84	WARM SPRINGS V.									
	Perennial Groundwater	7090	3000	3000	(1)		0	C-1	1020	Irrigation water rights (6,210 afa) are subject to conversion reduction. Environmental water rights (610 afa) are not available for conversion.
85	SPANISH SPRINGS V.									
	Perennial Groundwater	6450	1000	1000	(1)		5370	C-1	430	Water rights and domestic well allocations exceed perennial yield. Irrigation water rights (1,350 afa) subject to conversion reduction. Mining and Milling water rights (122 afa) may not be available for conversion. Construction water rights (200 afa) are not available for conversion.
	Truckee River Importation [†]				(2)	3920	3920			
86	SUN V.									
	Perennial Groundwater	20	25	20	(1)		0	C-1	90	Water rights and domestic well allocations exceed perennial yield. Irrigation water rights (14 afa) are subject to conversion reduction.
	Truckee River Importation [†]				(2)	2380	2380			
87/88	TRUCKEE MEADOWS/PLEASANT V									
	Perennial Groundwater	77270	32000	32000	(3)		23530	C-1	2450	Irrigation (9,810 afa) and Industrial (23,390 afa) groundwater waters rights conversion subject to reduction. Environmental groundwater rights (2,460 afa) are not available for conversion. Groundwater rights issued for Wildlife (2490afa) and Other (2400 afa) may have significant encumbrances making them unavailable for conversion to M&I or subject to conversion reduction. Per TROA operations, estimated Truckee River surface supply will produce 119,000 afa which includes 15,950 afa groundwater. Tributary contributions include flows from creeks between Farad and Hunter- Dog, O'Neil, Sunrise and Hunter creeks (~10,816 af of water rights) and those in the South Truckee Meadows- Evans, Galena, Steamboat, Thomas, Washoe, Whites Canyon (Howard) creeks (~25,561 af of water rights).
	Truckee River [†]	188020***	103000	103000	(4)	(10650)	84000			
	Truckee River-Tributary	36380	--	--	(5)		2350	C-4		
89	WASHOE V.									
	Perennial Groundwater	10780	5000	5000	(1)		840	C-1	1750	Irrigation water rights (6230 afa) subject to conversion reduction. Mining and Milling water rights (770 afa) may not be available for conversion. Environmental water rights (20 afa) are not available for conversion. Water rights issued for Wildlife and Other (830 afa) may have significant encumbrances making them unavailable for conversion to M&I or subject to conversion reduction.
	Washoe Valley Creeks	25280	--	--	(5)					Washoe Lake, the headwaters of Steamboat Creek, is fed by McEwen, Bryan, Musgrove, Thompson, Lewers, Davis, White Rock, Little Valley, Franktown, and Ophir creeks.
91	TRUCKEE CANYON SEGMENT									
	Perennial Groundwater	4190	2000	2000	(1)		10		530	Irrigation water rights (70 afa) subject to conversion reduction. Environmental water rights (30 afa) are not available for conversion. Water rights issued for Other (20 afa) may have significant encumbrances making them unavailable for conversion to M&I or subject to conversion reduction.
92A/92B	LEMMON V. (WEST & EAST)									
	Perennial Groundwater	3130	1300	1300	(6)		840	C-1	2160	Water rights and domestic well allocations exceed perennial yield. Irrigation and Industrial water rights (10 afa) conversion subject to reduction. Mining and Milling water rights (25 afa) may not be available for conversion.
	Truckee River Importation [†]				(2)	4350	4350			
	Honey Lake Importation [†]				(7)	8000	0	C-2		
93	ANTELOPE V.									
	Perennial Groundwater	60	150	60	(1)		0	C-1	210	Water rights and domestic well allocations exceed perennial yield. Mining and Milling water rights (5 afa) may not be available for conversion.
94	BEDELL FLAT									
	Perennial Groundwater	80	550	80	(1)		0	C-1	70	Water rights issued for Wildlife (1 afa) may have significant encumbrances making them unavailable for conversion to M&I or subject to conversion reduction.
95	DRY V.									
	Perennial Groundwater	3020	1000	1000	(1)		0	C-1	10	Irrigation water rights (25 afa) subject to conversion reduction.
97	HONEY LAKE V.									
	Perennial Groundwater [†]	16070	13000	13000	(1)	(8000)	0	C-1	30	Irrigation water rights (15,410 afa) are subject to conversion reduction. Construction water rights (280 afa) are not available for conversion.
99	RED ROCK V.									
	Perennial Groundwater	1610	1000	1000	(1)		0	C-1	380	Irrigation water rights (1,590 afa) are subject to conversion reduction.
100/100A	COLD SPRING V./LONG V. SUB AREA									
	Perennial Groundwater	5300	500	500	(8)		2400	C-3	230	Water rights and domestic well allocations exceed perennial yield.
21	SMOKE CREEK DESERT									
	Perennial Groundwater	12,200	16,000	12200	(12)		0		10	Irrigation water rights (11,650 afa) subject to conversion reduction. Water rights issued for Wildlife (450 afa) may have significant encumbrances making them unavailable for conversion to M&I or subject to conversion reduction.
Total Estimated Sustainable Water Resources				183,250						

NOTES:

- * Water rights include temporary rights, supplemental rights, nonconvertible rights and rights subject to reduction upon conversion based on State Engineer's policy. (9) Based on Washoe County Department of Water Resource GIS database count using Washoe County Assessor's records and State Engineer's Well-Log database, allocation assumes 1 afa per well.
- ** Water right values rounded to nearest ten acre-feet. (10) Water rights based on 4000 afa from STMWRF and 6700 afa from TMWRF. Estimated yield based on 2006 TMWRF, Sparks and Reno data records (ECO:LOGIC)
- *** Orr Ditch Decree total of approx. 188,024 afa of main stem rights excluding Claims 3 & 4.
- No data. (11) 2006 reclaimed water data from RSWRF, and Washoe County DWR wastewater influent records for STMWRF, CSWRF and LVWRF (Washoe County, DWR)
- † Exports of water resources not limited to specified hydrobasins and are subject to change based on future needs. (12) Potential water importation project; Pending water right applications and approval for export from hydrobasin subject to State Engineers' approval.
- (1) Groundwater availability based on State Engineer's estimate of Perennial Yield subject to final determination (Tracy Segment ruling currently under appeal).
- (2) Imported allocation of TMWA's resources.
- (3) Groundwater availability for the Truckee Meadows and Pleasant Valley Hydrobasins combined based on State Engineer's estimate of Perennial yield.
- (4) Portion of TROA 119,000 water supply dedicated to supply demand in the Truckee Meadows; excluding 15,950 AFA of groundwater production permitted by State Engineer's Office.
- (5) No State Engineer estimate of perennial yield which could be used for M&I
- (6) Combined State Engineer's estimate of perennial yield for Lemmon Valley West and East.
- (7) Importation of groundwater from Honey Lake Hydrobasin.
- (8) Combined State Engineer's estimate of perennial yield for Cold Spring Valley and Long Valley Sub basin area.

COMMENTS ON COMMITMENTS

- C-1 Groundwater dedications/duty by Washoe County to serve commitments as reported in the January 24, 2007, Fourth Quarter 2006 report to the State Engineer's Office. Not amended to account for supplemental rights.
- C-2 Commitments not yet established for imported groundwater. Washoe County may use available uncommitted imported groundwater to serve existing customers in Lemon Valley. Not amended to account for supplemental rights.
- C-3 Based on State Engineer's Manor of Use Records for 2006 and Utilities Inc. water budget for Cold Springs. Not amended to account for supplemental rights.
- C-4 Creek rights committed for return flow. Adjusted per the State Engineer based on priority

2010 - 2030 Consensus Forecast Population and Building and Water Use Projections

Year	Population	Domestic Well Dwelling Units	Single Family Dwelling Units	Multi Family Dwelling Units	Total Dwelling Units	Commercial Buildings	Domestic Well Use	Single Family Use	Multi Family Use	Commercial Use	Metered Irrigation Use	Total Water Use
2010	434,519	8,370	116,159	52,102	176,631	10,253	8,370	57,326	7,187	14,346	11,349	98,579
2011	442,076	8,555	119,905	51,918	180,378	10,374	8,555	59,175	7,161	14,516	11,498	100,905
2012	449,680	8,738	122,773	52,438	183,949	10,548	8,738	60,590	7,233	14,759	11,856	103,177
2013	457,289	8,930	126,453	53,734	189,117	10,764	8,930	62,406	7,412	15,061	12,420	106,229
2014	464,923	9,024	128,600	53,632	191,256	10,918	9,024	63,466	7,398	15,277	12,634	107,798
2015	472,718	9,049	129,914	54,447	193,410	11,070	9,049	64,114	7,510	15,490	13,013	109,176
2016	480,611	9,132	132,242	55,669	197,043	11,208	9,132	65,263	7,679	15,683	13,445	111,202
2017	488,591	9,285	135,666	56,512	201,463	11,356	9,285	66,953	7,795	15,890	13,823	113,746
2018	496,441	9,431	138,874	57,343	205,648	11,523	9,431	68,536	7,910	16,123	14,227	116,227
2019	504,352	9,564	141,400	57,808	208,772	11,699	9,564	69,783	7,974	16,370	14,578	118,268
2020	512,138	9,678	143,908	58,504	212,090	11,871	9,678	71,021	8,070	16,610	14,965	120,344
2021	519,974	9,781	146,500	59,384	215,665	12,028	9,781	72,300	8,191	16,830	15,364	122,466
2022	527,681	9,888	149,072	60,140	219,100	12,184	9,888	73,569	8,295	17,048	15,738	124,539
2023	535,538	10,000	151,804	61,055	222,859	12,345	10,000	74,917	8,422	17,274	16,148	126,761
2024	543,242	10,123	154,610	61,831	226,564	12,508	10,123	76,302	8,529	17,502	16,537	128,992
2025	551,013	10,242	157,314	62,489	230,045	12,673	10,242	77,637	8,619	17,733	16,906	131,137
2026	558,625	10,355	159,949	63,227	233,531	12,838	10,355	78,937	8,721	17,963	17,291	133,267
2027	566,358	10,466	162,555	63,946	236,967	12,999	10,466	80,223	8,820	18,189	17,666	135,364
2028	574,047	10,576	165,190	64,707	240,473	13,159	10,576	81,524	8,925	18,413	18,047	137,484
2029	582,287	10,687	167,901	65,515	244,103	13,321	10,687	82,861	9,037	18,639	18,439	139,664
2030	590,533	10,808	170,675	66,244	247,727	13,485	10,808	84,230	9,137	18,869	18,820	141,865

Northern Nevada Water Planning Commission

STAFF REPORT

DATE: March 26, 2010

TO: Chairman and Members, Northern Nevada Water Planning Commission

FROM: Jim Smitherman, Water Resources Program Manager

SUBJECT: Status report on the development of the 2011 Comprehensive Regional Water Management Plan, including outline, timeline and contractual services, and possible direction to staff

SUMMARY

Staff will provide an oral status report on the ongoing development of the 2011 Comprehensive Regional Water Management Plan. Attached for your reference is an outline of the Plan with a timeline for completion.

JS:jd

Attachment

**Draft - Comprehensive Regional Water Management Plan
2011 Update Proposed Table of Contents and Schedule**

Table of Contents	Timeline in Months														
	2009			2010											
	Oct	Nov	Dec	Jan	Feb	Mar	Apr	May	Jun	Jul	Aug	Sep	Oct	Nov	Dec
Executive Summary															
Introduction															
<i>Purpose</i>															
<i>Background</i>															
<i>Responsibility</i>															
<i>Implementation</i>															
<i>Format</i>															
<i>Application</i>															
<i>Directions for Future Revision of the Plan</i>															
<i>Abbreviations</i>															
<i>Glossary</i>															
Chapter 1 - Regional Water Planning Policies and Criteria															
<i>Background</i>															
<i>Policies and Criteria</i>															
<i>Goal 1: Plan for the Development of Sustainable Water Supplies</i>															
<i>Goal 2: Plan for Regional Wastewater Treatment and Disposal Requirements</i>															
<i>Goal 3: Plan for the Protection of Human Health, Property, Water Quality and the Environment through Regional Flood Plain and Storm Water Management</i>															
<i>Goal 4: Support the Implementation of the Regional Plan</i>															
Chapter 2 - Water Resources															
<i>Purpose and Scope</i>															
<i>Summary of Findings</i>															
<i>Introduction</i>															
2.1 Sources of Water															
2.2 Factors Affecting Water Resource Sustainability															
<i>References Cited</i>															
Chapter 3 – Water Purveyors															
3.1 Public Water Purveyors															
3.2 Non-Public Water Purveyors															
3.3 Reclaimed Water Purveyors (Reno, Sparks, WC)															
3.4 Water Rights Dedication Requirements															
<i>References Cited</i>															
Chapter 4 - Wastewater															
<i>Purpose and Scope</i>															
<i>Summary and Findings</i>															
4.1 Service Providers (Reno, Sparks, WC, SVGID)															
4.2 Water Reclamation Facilities															
4.3 Wastewater Planning for Other Areas															
4.4 On-site Disposal Systems															
4.5 Watershed Management Programs to Protect the Availability and Quality of Water Resources for Municipal and Industrial Use															
<i>References Cited</i>															
Chapter 5 – Background on Flood Control / Storm Drainage															
<i>Purpose and Scope</i>															
<i>Summary of Findings</i>															
5.1 Flood Damage															
5.2 Flood Types															
5.3 Flood History and Regional Setting															
5.4 Storm Water Drainage Planning															
5.5 Flood Plain Management and Regional Flood Control Master Plan															
5.6 Legislation and Programs to Address Flood Issues															
5.7 Truckee River Flood Control Efforts															
5.8 Flood Control Overview by Hydrographic Basin															
<i>References Cited</i>															

**Draft - Comprehensive Regional Water Management Plan
2011 Update Proposed Table of Contents and Schedule**

Table of Contents	Timeline in Months														
	2009			2010											
	Oct	Nov	Dec	Jan	Feb	Mar	Apr	May	Jun	Jul	Aug	Sep	Oct	Nov	Dec
Chapter 6 – Population Forecast and Projections of Water Demand, Peak Day Requirements and Wastewater Flow															
<i>Purpose and Scope</i>															
<i>Summary of Findings</i>															
6.1 Population Projections (Consensus Forecast)															
6.2 Water Demand Projections															
6.3 Population that May be Served by Identified Sustainable Water Resources															
6.4 Needs Beyond 20-Year Plan Horizon															
6.5 Wastewater Flow Projections															
6.6 Summary of 2030 Estimated M&I Water Demand and Wastewater Flows															
<i>References Cited</i>															
Chapter 7 – Water Conservation - Efficient Use of Water															
<i>Purpose and Scope</i>															
<i>Introduction</i>															
<i>Summary of Findings</i>															
7.1 Regional Benefits of Conservation															
7.2 Overview of Progress															
7.3 Measuring Progress															
7.4 Laws, Ordinances, Agreements and Plans Facilitating Conservation															
7.5 Ongoing Measures to Conserve Water															
7.6 Future Water Conservation Initiatives															
7.7 Drought															
7.8 Recommendations for Future Action															
<i>References Cited</i>															
Chapter 8 – Issues Identification and Proposed Alternatives															
<i>Purpose and Scope</i>															
<i>Background</i>															
8.1 Municipal Water Resources															
8.2 Reliability of Water Service in Response to Contamination Event on Truckee River or Tributaries															
8.3 Water Conservation (Delete?)															
8.4 Wastewater Management															
8.5 Reclaimed Water Management															
8.6 Septic Tanks and Water Quality															
8.7 Watershed Based Water Quality Planning/TMDL															
8.8 Groundwater Resource Development and Impact to Domestic Wells															
8.9 Integrated Use of Water Rights															
8.10 Water Resource and Land Use Planning															
8.11 Consistency in Local Government Drainage Standards															
8.12 Regional Flood Plain Management and Flood Control															
8.13 Groundwater Remediation in Central Truckee Meadows															
<i>References Cited</i>															
Chapter 9 – Cost and Financing Analysis															
<i>Purpose and Scope</i>															
9.1 Water Supply															
9.2 Wastewater Treatment															
9.3 Reclaimed Water															
9.4 Flood /Drainage															
9.5 Public Water Purveyor Consolidation															
<i>References Cited</i>															
Chapter 10 – Action Plan															
<i>Purpose and Scope</i>															
<i>Introduction</i>															

Northern Nevada Water Planning Commission

STAFF REPORT

DATE: March 26, 2010

TO: Chairman and Members, Northern Nevada Water Planning Commission

FROM: Jim Smitherman, Water Resources Program Manager

SUBJECT: Review of the Western Regional Water Commission (“WRWC”) tentative budget for fiscal year 2010-2011, and possible recommendation to the WRWC

SUMMARY

Staff has developed a tentative fiscal year 2010-2011 budget for the WRWC including revenues, staff and non-staff professional services, and in-kind services. Additional pages include a five-year cash flow projection and budget details for professional services related to priority projects and routine operating expenses.

BACKGROUND

The Western Regional Water Commission is required to submit a budget to the Nevada Department of Taxation after holding a hearing in May 2010. The attached tentative budget is provided for NNWPC review, discussion, possible direction to staff and possible recommendation to the WRWC as presented or with revisions.

FISCAL IMPACT

The fiscal year 2010-2011 budget recommendation provides for \$1,400,852 in revenues \$2,470,632 in expenses and an ending fund balance of approximately \$2,625,000. Budget expenses include a maximum of \$1,886,700 for Work Plan activities, \$480,932 for three full time staff and a WRWC attorney, and various routine operating expenses in the amount of \$103,000.

RECOMMENDATION

Staff recommends that the NNWPC review the tentative budget for fiscal year 2010-2011 and, if acceptable, make a recommendation to the WRWC for approval.

JS:jd

Attachment: Western Regional Water Commission July 1, 2010 – June 30, 2011 Budget

Western Regional Water Commission
July 1, 2010 - June 30, 2011
Budget - Draft

Budget Category	1.5% RWMF	NOTE	Washoe County In-Kind	NOTE	TMWA In-Kind	NOTE	SVGID In-Kind	NOTE
	Amount		Amount		Amount		Amount	
REVENUE								
Estimated Water Surcharge Revenues	1,367,000							
Estimated Interest Income	33,852							
Total Revenue	1,400,852		0		0		0	
PROFESSIONAL SERVICES/SUPPLIES	Amount		Amount		Amount		Amount	
Estimated Professional Services	1,886,700	1						
Staff Services	480,932	2	62,629	3	25,200	4	1,500	8
Non-Staff Services	103,000				1,200	5		
Total Professional Services/Supplies	2,470,632		62,629		26,400		1,500	
OTHER EXPENSES	Amount		Amount		Amount		Amount	
Estimated Misc.			97,237	6	2,000	7		
Total Other Expense	0		97,237		2,000			
Total Expenses	2,470,632		159,866		28,400		1,500	

Net Decrease in Cash Reserves (\$1,069,780) ⁹

NOTES:

1. Proposed budget for the 1.5% Regional Water Management Fund (1.5% RWMF) provides legal spending authority for projects yet to be approved by the WRWC upon recommendations provided by the NNWPC. Specific per project scope and cost yet to be developed and approved by the WRWC.
2. Proposed budget provides legal spending authority for contract staff services previously approved by the WRWC.
3. Washoe County estimate for labor overhead: 1.5% RWMF management, accounting, purchasing, human resources, information technology, routine/administrative and GIS/drafting services.
4. TMWA estimate to perform administrative tasks such as drafting and posting agendas, producing staff reports, delivering agenda packets, contracts to provide WRWC minutes and website postings and updates.
5. TMWA estimate for supplies to produce agendas, staff reports and agenda packets.
6. Washoe County estimate for services and supplies overhead: office space, utilities, computer hardware, software, copier, supplies.
7. TMWA estimate for office space, copier, computer expenditures.
8. Cost for various SVGID overhead related to providing staff resources.
9. Budget expenses exceed revenues by \$1,069,780, which reduces projected cash revenues to approximately \$2.62 million at 6/30/11.

**Western Regional Water Commission
Cash Flow Projections
December 31, 2009 - June 30, 2014**

Quarter Ending	Total Projected Water Fund Revenue	Total Operating Expenses ¹	Regional Water Planning Projects	Regional Wastewater Planning Projects ²	Conservation, Sustainability, Climate Change	Water Management Plan	Total Project Expenditure	Cash Balance Running Total
12/31/2009								3,462,490
3/31/2010	231,935	(132,883)	0	(40,000)	(38,473)	(25,000)	(103,473)	3,458,069
6/30/2010	334,051	(132,883)	0	(41,387)	(38,473)	(26,000)	(105,860)	3,553,378
9/30/2010	379,346	(160,883)	(62,500)	(275,000)	(72,500)	(10,000)	(420,000)	3,351,841
12/31/2010	457,941	(137,883)	(62,500)	(375,000)	(97,500)	(10,000)	(545,000)	3,126,899
3/31/2011	231,096	(137,883)	(62,500)	(250,000)	(72,500)	(10,000)	(395,000)	2,825,112
6/30/2011	332,469	(137,883)	(62,500)	(250,000)	(72,500)	(10,000)	(395,000)	2,624,698
9/30/2011	377,024	(161,883)	(62,500)	(250,000)	(72,500)	(10,000)	(395,000)	2,444,839
12/31/2011	455,673	(137,883)	(62,500)	(250,000)	(97,500)	(10,000)	(420,000)	2,342,630
3/31/2012	229,135	(137,883)	(62,500)	(250,000)	(72,500)	(10,000)	(395,000)	2,038,882
6/30/2012	330,503	(137,883)	(62,500)	(250,000)	(72,500)	(10,000)	(395,000)	1,836,503
9/30/2012	375,054	(162,883)	(62,500)	(250,000)	(72,500)	(10,000)	(395,000)	1,653,673
12/31/2012	453,695	(137,883)	(62,500)	(250,000)	(97,500)	(10,000)	(420,000)	1,549,486
3/31/2013	227,152	(137,883)	(62,500)	(250,000)	(72,500)	(10,000)	(395,000)	1,243,755
6/30/2013	328,516	(137,883)	(62,500)	(250,000)	(72,500)	(10,000)	(395,000)	1,039,388
9/30/2012	373,061	(162,883)	(62,500)	(250,000)	(72,500)	(10,000)	(395,000)	854,566
12/31/2012	451,698	(137,883)	(62,500)	(250,000)	(97,500)	(10,000)	(420,000)	748,381
3/31/2013	225,150	(137,883)	(62,500)	(250,000)	(72,500)	(10,000)	(395,000)	440,647
6/30/2013	326,508	(137,883)	(62,500)	(250,000)	(72,500)	(10,000)	(395,000)	234,272
9/30/2013	371,048	(162,883)	(62,500)	(250,000)	(72,500)	(25,000)	(410,000)	32,437
12/31/2013	449,642	(137,883)	(62,500)	(250,000)	(97,500)	(25,000)	(435,000)	(90,803)
3/31/2014	223,052	(137,883)	(62,500)	(250,000)	(72,500)	(25,000)	(410,000)	(415,635)
6/30/2014	324,367	(137,883)	(62,500)	(250,000)	(72,500)	(25,000)	(410,000)	(639,150)
TOTALS	\$6,120,008	(\$2,568,894)	(\$1,000,000)	(\$4,231,387)	(\$1,336,945)	(\$211,000)	(\$6,779,332)	

Notes:

- Operating expenses include: employees, legal counsel, minutes, web site, travel & training, annual audit and miscellaneous expenses (i.e. SNCAT, printing & reproduction, publications, periodicals and public notices). Based on projected quarterly operating expenditures, WRWC mandated (WRWC Meeting 3/13/09) a six month operating reserve be maintained in the budget at all times which requires a minimum cash reserve of \$286,400. Assumes continuation of in-kind service contributions.
- Cost is for regional planning element. Assumes majority of funding to be provided by wastewater purveyors.

**Western Regional Water Commission
Fiscal Year 2010-2011 Professional Services Budget Detail**

Professional Services Category	Budget	2009/2010 P.O. Amount Issued	Estimated Expenditure Through 6/30/2010	Estimated Amount Remaining as of 6/30/2010	2010/2011 1st Quarter Budget	2010/2011 2nd Quarter Budget	2010/2011 3rd Quarter Budget	2010/2011 4th Quarter Budget	2010/2011 Available Budget Total	Expense Description/Example
<i>Regional Water Management Strategy</i>		\$0	\$0	\$0	\$62,500	\$62,500	\$62,500	\$62,500	\$250,000	
Regional Water Planning Projects				\$0	\$62,500	\$62,500	\$62,500	\$62,500	\$250,000	
<i>Cloud Seeding</i>		\$45,000	\$0	\$45,000	\$25,000	\$25,000	\$25,000	\$25,000	\$100,000	
<i>TMCFC</i>		\$0	\$0	\$0	\$12,500	\$12,500	\$12,500	\$12,500	\$50,000	
<i>Washoe ET Project</i>		\$12,159	\$0	\$0	\$3,500	\$3,500	\$3,500	\$3,500	\$14,000	
<i>(DinSar) Groundwater Monitoring Program</i>		\$12,690	\$0	\$0	\$3,000	\$3,000	\$3,000	\$3,700	\$12,700	
<i>2009 Water Usage Review Program</i>		\$64,100	\$64,100	\$0	\$37,500	\$37,500	\$37,500	\$37,500	\$150,000	Inclusive of independent contractor for SVGID & STMGID
<i>Certified Landscape Technician Program</i>		\$25,000	\$25,000	\$0	\$0	\$0	\$0	\$25,000	\$25,000	
Regional Water Conservation				\$45,000	\$81,500	\$81,500	\$81,500	\$107,200	\$351,700	
<i>Integrated Wastewater and Reclaimed Water System Planning</i>				\$0	\$70,000	\$70,000	\$112,500	\$212,500	\$465,000	Inclusive of Terminal Lakes Grant Match
Regional Reclaim Water Planning Projects				\$0	\$70,000	\$70,000	\$112,500	\$212,500	\$465,000	
Regional Storm Water Planning Projects				\$0	\$0	\$0	\$0	\$0	\$0	
Regional Flood Control Planning Projects				\$0	\$0	\$0	\$0	\$0	\$0	
<i>TMDL Phase I - LTI</i>		\$400,000	\$100,000	\$300,000	100,000	100,000	100,000	100,000	\$400,000	
<i>TMDL Regulatory Assistance</i>		\$0	\$0	\$0	37,500	37,500	37,500	37,500	\$150,000	
<i>TMDL Legal Assistance</i>		\$50,000	\$50,000	\$0	\$12,500	\$12,500	\$12,500	\$12,500	\$50,000	
<i>TMDL Facilitation</i>		\$99,552	\$0	\$99,552	\$25,000	\$25,000	\$25,000	\$25,000	\$100,000	
<i>Marlin Drain Hydraulic Analysis</i>		\$48,000	\$2,000	\$0	\$0	\$0	\$0	\$0	\$0	
Regional Wastewater Planning Projects				\$399,552	\$175,000	\$175,000	\$175,000	\$175,000	\$700,000	
<i>Amendments/Updates</i>		\$0	\$0	\$0	\$5,000	\$5,000	\$5,000	\$5,000	\$20,000	
<i>Plan Development Contracts</i>		\$87,000	\$0	\$87,000	\$25,000	\$25,000	\$25,000	\$25,000	\$100,000	DWR GIS; Plan Preparation; and EcoLogic
Comprehensive Plan				\$87,000	\$30,000	\$30,000	\$30,000	\$30,000	\$120,000	
Totals				\$531,552	\$349,000	\$349,000	\$349,000	\$374,700	\$1,886,700	

Western Regional Water Commission
Fiscal Year 2010-2011 Routine Operating Budget Detail

Quarter Ending	2010/2011 1st Quarter Budget	2010/2011 2nd Quarter Budget	2010/2011 3rd Quarter Budget	2010/2011 4th Quarter Budget	2010/2011 Annual Routine Operating Budget Total	Expense Description/Example
WRWC Employees	\$83,633	\$83,633	\$83,633	\$83,633	\$334,532	Cost for <i>Support Staff</i> services as defined by employee services contract entered into between Washoe County and WRWC.
Mileage Expenses	\$600	\$600	\$600	\$600	\$2,400	Annual routine daily vehicle mileage expenses.
Legal Counsel	\$36,000	\$36,000	\$36,000	\$36,000	\$144,000	Cost for <i>Legal Counsel</i> services as defined by contract as entered into between John Rhodes and WRWC
Staff Services Subtotal	\$120,233	\$120,233	\$120,233	\$120,233	\$480,932	
Minutes	\$5,000	\$5,000	\$5,000	\$5,000	\$20,000	Annual service contract to provide for recording of meetings and transcription of minutes.
Website	\$5,000	\$5,000	\$5,000	\$5,000	\$20,000	Contract for initial website development; website content and design services; annual website updating, maintenance, and hosting; specialized programming services; digital library development and updating; hosting, development and maintenance of SharePoint site; licensing fees, software and software updates, training/programming reference materials; hosting of TRIG server.
Video Coverage	\$2,500	\$2,500	\$2,500	\$2,500	\$10,000	Annual Expense for video coverage of WRWC and NNWPC Meetings.
CAFR & Audit	\$23,000	\$0	\$0	\$0	\$23,000	Annual Expense for CAFR development and Financial Audit.
Regional Training	\$750	\$750	\$750	\$750	\$3,000	Cost of travel and training for staff members <i>not covered by in-kind services</i> including transportation services, mileage reimbursement, lodging, meals, registration and other miscellaneous cost such as reference materials, parking meters, field trips, etc.
Regional Travel	\$1,750	\$1,750	\$1,750	\$1,750	\$7,000	Cost of travel and training for staff members <i>not covered by in-kind services</i> including transportation services, mileage reimbursement, lodging, meals, registration and other miscellaneous cost such as reference materials, parking meters, field trips, etc.
Advertising	\$2,500	\$2,500	\$2,500	\$2,500	\$10,000	
Misc. Operating	\$2,500	\$2,500	\$2,500	\$2,500	\$10,000	Printing & reproduction, publications, and public notices, refreshments for volunteer boards/commissions, GIS and other in-house member agency support (not covered by in-kind services), equipment & supplies (i.e. computers, computer related supplies such as CDs, DVDs, etc.), projectors, printers, CD label machine, poster board, reproduction services, software licensing and fees, advertising, labels, business cards, periodicals, subscriptions, books, postage & mailing, promotion and public materials, miscellaneous equipment rental.
Expiration of In-Kind Services (TMWA/DWR/SVGID)	\$0	\$0	\$0	\$0	\$0	Currently all in-kind service costs are covered by member agencies as specified by interlocal agreement.
Non-Staff Services Subtotal	\$43,000	\$20,000	\$20,000	\$20,000	\$103,000	
Totals	\$163,233	\$140,233	\$140,233	\$140,233	\$583,932	

Northern Nevada Water Planning Commission

STAFF REPORT

DATE: March 24, 2010
TO: Chairman and Members, Northern Nevada Water Planning Commission
FROM: Jim Smitherman, Water Resources Program Manager
SUBJECT: Program Manager's Report

Attached are the following updated reports for your review:

- a) Status Report of Projects and Work Plan supported by the Regional Water Management Fund
- b) Financial report on the Regional Water Management Fund
- c) Truckee River Flood Management Project status report
- d) Informational report from the NNWPC representative on the Truckee Meadows Water Authority Standing Advisory Committee

**Status Report of Projects and Work Plan
Supported by the Regional Water Management Fund**

Approved by Water Planning Commission	Approved by WRWC	Project Name	Contractor/Provider	Amount	Balance Remaining	Percent Complete	Target Completion Date	Notes
	N/A	D-InSAR	Bureau of Mines & Geology	12,690	12,690	0%	12/31/10	Work in Progress
8/15/07	N/A	Washoe Evapotranspiration (ET)	DRI (Desert Research Institute)	20,745	11,753	43%	10/31/2010	Work is in progress
4/1/09	4/10/09	North Valleys - Amendment to include Regional Integrated Wastewater System Planning	City of Reno (ECO:LOGIC)	96,000	7,954	92%	6/30/10	Work is in progress
6/4/08	7/11/08	TMDL Phase I	City of Reno (LimnoTech)	197,500	0	100%	11/01/09	Work continues with Amendment for \$400,000 (see next line)
N/A	7/10/09	Amendment to TMDL Phase I	City of Reno (LimnoTech)	400,000	356,034	11%	7/31/10	Work is in progress
N/A	3/13/09	TMDL Legal Services	Somach Simmons & Dunn	50,000	8,033	84%	6/30/10	Work is in progress
1/7/09	3/13/09	Marlin Drain - Hydro/Hydraulic analysis of tributary watershed to Swan Lake	Washoe County Public Works (Manhard)	50,000	2,021	96%	4/1/10	Work is in progress
N/A	11/13/09	Cloud Seeding Program	(DRI) Desert Research Institute	45,000	39,294	13%	3/31/11	Work is in progress
12/2/09	N/A	GIS Maps & Figures in the Water Management Plan	Washoe County Dept Water Resources GIS Services	17,000	17,000	0%	6/30/11	Work is in progress
12/2/09	1/8/10	Technical Services on the Water Management Plan	ECO:LOGIC Engineering	49,000	46,710	5%	6/30/11	Work is in progress
12/2/09	N/A	Certified Landscape Technician Program	Nevada Landscape Association (NLA)	25,000	23,668	5%	9/30/10	Work is in progress

::Administration Projects								
N/A	5/21/09 (JS)	Website Design - First Scope of Work	Washoe County Community Relations	4,400	3,905	11%	6/30/10	Work is in progress
N/A	12/10/09 (JS)	Website Design - Second Scope of Work	Washoe County Technology Services	17,850	17,850	0%	6/30/10	Work is in progress
6/3/09	7/2/09 (JS)	SNCAT Televising of WRWC & NNWPC FY 09-10	SNCAT	7,200	6,513	10%	6/30/10	Work is in progress
6/3/09	7/2/09 (JS)	G3 Productions - NNWPC FY 09-10 County Chambers	G3 Productions	2,040	1,343	34%	6/30/10	Work is in progress

::Grant Projects								
N/A	11/13/09	Clean Water Act Grant Regional Integrated Wastewater System Planning	Nevada Division of Environmental Protection (NDEP)	40,000	40,000	0%	6/30/10	Work is in progress

Financial Report on the Regional Water Management Fund

Run Date 03/25/10
Fund 766
Report: 400/ZF15
Period 1 thru 9 2010

Accounts	Plan Budget	Actual (Revenue & Expenses)	PO Commit (Remaining PO Balance)	Actual + PO	Available (Budget minus Actual + PO)	Avail%	PreCommit (PO's Requested)	Available (Budget minus PO Requisitions)	Avail% (of Budget minus all Commitments)
481000 Interest-Pooled Inv.	30,180.00-	46,884.69-		46,884.69-	16,704.69	55		16,704.69	55
482100 RGL Pooled Inv.		4,986.00-		4,986.00-	4,986.00			4,986.00	
482200 URGL Pooled Inv.		10,705.55-		10,705.55-	10,705.55			10,705.55	
491060 Water Surcharge 1.5%	1,446,000.00-	1,041,262.62-		1,041,262.62-	404,737.38-	28-		404,737.38-	28-
** REVENUE	1,476,180.00-	1,103,838.86-		1,103,838.86-	372,341.14-	25-		372,341.14-	25-
701150 Contractual Wages	334,532.00	189,595.77		189,595.77	144,936.23	43		144,936.23	43
* SALARIES AND WAGES	334,532.00	189,595.77		189,595.77	144,936.23	43		144,936.23	43
710100 Professional Services	2,010,083.00	330,186.71	656,916.17	987,102.88	1,022,980.12	51		1,022,980.12	51
710120 Legal Fees	144,000.00	114,982.73	248,033.04	363,015.77	219,015.77-	152-		219,015.77-	152-
710139 Fin Consult Services	22,000.00				22,000.00	100		22,000.00	100
710149 Invest Pool Alloc Ex		1,882.82		1,882.82	1,882.82-			1,882.82-	
710200 Service Contract		1,985.01	11,753.26	13,738.27	13,738.27-			13,738.27-	
710509 Seminars and Meetings	10,000.00				10,000.00	100		10,000.00	100
710512 Auto Expense	2,400.00				2,400.00	100		2,400.00	100
711210 Travel	10,000.00				10,000.00	100		10,000.00	100
711508 Computers nonCapital		236.13		236.13	236.13-			236.13-	
711509 Comp Sftw nonCapital		402.19		402.19	402.19-			402.19-	
* SERVICES AND SUPPLIES	2,198,483.00	449,675.59	916,702.47	1,366,378.06	832,104.94	38		832,104.94	38
** EXPENDITURES	2,533,015.00	639,271.36	916,702.47	1,555,973.83	977,041.17	39		977,041.17	39
*** Total	1,056,835.00	464,567.50-	916,702.47	452,134.97	604,700.03	57-		604,700.03	57-



WASHOE COUNTY

"Dedicated To Excellence in Public Service"

www.co.washoe.nv.us

CM/ACM DC
Finance N/A

DA N/A

Risk Mgt. N/A

HR N/A

Other N/A

STAFF REPORT

BOARD MEETING DATE: March 23, 2010

DATE: March 1, 2010
TO: Board of County Commissioners
FROM: Naomi Duerr, P.G., Director, Truckee River Flood Management Project,
 850-7420 nduerr@washoecounty.us
SUBJECT: Acknowledge Receipt of Truckee River Flood Management Project
 Status Report for February 2010. (All Commission Districts.)

SUMMARY

A status report on the activities related to the Truckee River Flood Management Project for the month of February is provided herein.

County Priorities/Goals supported by this item: Preserving natural resources. Promoting quality economic development; managing intermittent flooding events along the Truckee River, thereby protecting property, restoring habitat, improving water quality and promoting recreational uses.

PREVIOUS ACTION

The most recent status report for January 2010 was presented to the Board of County Commissioners at the February 23, 2010 meeting.

BACKGROUND

Below is a list of the primary activities that were accomplished in the month of February 2010.

Local Sponsors/Collaborative Efforts

Joint Powers Authority (JPA) - Naomi Duerr, Flood Project Director presented the Key Provisions for the Joint Powers Authority at the Joint Meeting of Reno, Sparks and Washoe County on February 1st. The Key Provisions document was unanimously approved by all three jurisdictions. The document is available at www.truckeeflood.us and outlines the nuances associated with the proposed formation of the JPA as the governing unit for the Flood Project. Some of the Key Provisions approved by the FPCC include moving from a 23-person board to a 6-member board with equal representation (2 each) from Reno, Sparks and Washoe County, and a change from unanimous voting to majority rules, with a few items requiring approval by 75% of the body.

Flood Project to Emphasize Local Action but Continue Working with the Corps – The Flood Project Coordinating Committee had significant discussion at their February 12th Retreat regarding the value of continuing to work with the Corps of Engineers on the Truckee River Flood Project. The decision was to continue doing as much locally as possible but to continue working with the Corps to obtain authorization and federal funding for the project. The current challenge continues to be a shortage in local funding for the project. Based on discussion at the Retreat, that challenge will be met head on by the members of the Flood Board as they search for ways to enhance revenues. Additionally, the Flood Project has requested additional federal funding from the Corps (\$20 Million) for construction of some project elements authorized in 1988.

UNR Memorandum of Understanding (MOU) – At the February 12th Retreat, the much anticipated MOU with UNR was discussed. UNR reported internal meetings as well as meetings with the Flood Project are currently underway. The next steps include continued negotiations, with the Chair and Vice Chair of the Flood Project to be added to the negotiating team, and an update on the MOU to the University System's Board of Regents at their June meeting.

Builder's Association - Naomi Duerr, Flood Project Director met with the Builder's Association Infrastructure and Planning Committee February 8th and presented an update on the Flood Project's latest developments, particularly the newly proposed regulatory role for the Flood Management Authority (JPA) which is currently being set up. The new role would involve staff reviewing proposed commercial or residential developments utilizing a variety of tools such as the regional hydrologic model (currently being developed), to ensure that new developments will not harm the Flood Project's infrastructure, reduce its level of flood protection, or increase flooding in surrounding areas. The committee reviews local land use, infrastructure and planning issues impacting development and construction and is currently part of a public / private sector task force reviewing and updating all building codes for the Northern Nevada localities.

Technical Advisory Committee (TAC) – The TAC met February 5th and discussed a number of items including the Joint Powers Authority (JPA), Corps process and schedule, proposed budget and cash flow for FY 10-11, proposed revisions to the U.S. Army Corps of Engineers' "Principals and Guidelines" that govern administration and performance of Corp' projects and possible formulation of comments to those proposed revisions.

Working Group – The Working Group met February 24th and discussed a number of items including the proposed budget and cash flow for FY 10-11, proposed revisions to the U.S. Army Corps of Engineers' "Principals and Guidelines" that govern administration and performance of Corp' projects and possible formulation of comments to those proposed revisions. In addition, representatives to the FPCC were discussed for 2010 with no changes resulting from the discussion.

TRAction Projects

Home Elevation - Jay Aldean, Flood Project Deputy Director met with the Builder's Association of Northern Nevada (BANN) on the Home Elevation program on February

10th. The draft Home Elevation program was presented for vetting with feedback solicited on potential changes or additions going forward. These comments and suggestions were recorded for continued discussion and potential inclusion in the final Home Elevation Program now expected to be implemented in late spring 2010.

Other TRAction Projects currently underway include the design of the Sparks North Truckee Drain, the design of the Virginia Street Bridge replacement, and construction of the Lower Mustang Restoration Project.

Improve Government Efficiency and Financial Stability

Appropriations - The Flood Project has finalized appropriation requests to the federal delegation for action in Fiscal Year 10/11 which starts October 1st. Letters of support from all Flood Project partners accompanied those requests. The appropriation request is for \$10 million in general investigations funding to complete planning and design of authorized projects, and \$20 million for construction of projects authorized in 1988.

Flood Project Budget FY 10-11 – At the February 12th Retreat, the FPCC approved the preliminary Capital Infrastructure Plan for the FY 10-11 Flood Project budget which begins July 2010. The emphasis for this discussion was to provide as much flood protection, as soon as possible, and in doing so, to stimulate the economy with new jobs. The discussion also centered on the need for additional revenue sources, such as fees for flood benefits, in order to continue the momentum established with the Flood Project's first four construction projects. Projects proposed for next year include additional funds for home elevations, flood protection at Rainbow Bend, a study of the feasibility of constructing a levee at Wadsworth, and design of the Tracy Pond Restoration Project. Specifics on the proposed budget and the Project's cash flow projections is available at:
<http://truckeefflood.us/uploads/meetings/1056724903-Agenda%20Book%20Retreat%202-12-10.pdf>

Provide Excellent Public Services

ASCE AWARD - The Flood Project's TRAction Project for the Reno-Sparks Indian Colony (levee/floodwall) was awarded the region's highest honor "Outstanding Achievement in Civil Engineering" for the Environment by the local chapter of the American Society of Civil Engineers (ASCE) February 2nd. Kudos go to all the partners on the project, most especially Washoe County Public Works for stepping up to manage the project in the person of Greg Belancio, PE. Honors also went to Eric Scheetz, P.E., Paul Urban, P.E., and Jay Aldean, P.E., all Flood Project staff, for their varied contributions, and to the Reno-Sparks Indian Colony team of Chairman Arlen Melendez, Scott Nebesky and Steve Moran.

In addition, Eric Scheetz, P.E., our youngest engineer, was selected as the ASCE "Young Engineer of the Year" for all his contributions to the community.

Downtown Improvement Association (DIA) - Danielle Henderson, Natural Resource Manager gave a presentation to the DIA on the Flood Project Recreation Plan February 4th. This item was presented at the regularly scheduled monthly meeting for the DIA and

provided an opportunity for that group to learn more about the Downtown “reach” of the Project and the positive benefits expected for the area.

Recent News Articles – Two news articles and an editorial about the Truckee River Flood Project appeared in local newspapers in February. The articles focused on the problems recently identified with the hydraulic model being used to calculate floodplains and to size the project (i.e. determine the level of flood protection that would be cost shared by the Corps.) The articles can be found at http://truckeeflood.us/269/newspaperwritten_articles.html

Flood Awareness – Paul Urban, Flood Project Manager and Aaron Kenneston, Washoe County Emergency Manager recorded a radio Public Service Program at Lotus Radio KDOT 104.5. February 10th. The ½ hour discussion format with Chuck Short included Flood Awareness and Flood Preparedness information. The air date and time was February 28th at 7:30am with random airings expected on various other Lotus stations (KHIT-1450AM, KOZZ-105.7, KPLY-630AM) the following week.

In addition, Jay Aldean, Deputy Director of the Flood Project and Christina Conti of the Washoe County Emergency Operations Center recorded a Flood Awareness, Flood Preparedness interview February 11th at Americom Radio with Connie Wray of "ALICE" radio. The 1/2 hour program aired Sunday, February 14th at 6am on all the Americom radio stations (KBZZ-1270AM, KJFK-1230AM, KODS-103.7, KRNO-106.9, KWNZ-93.7, KZTQ-97.3, KLCA-96.5).

FISCAL IMPACT

No fiscal impact - for information only.

RECOMMENDATION

Staff recommends that the Board acknowledge receipt of the Truckee River Flood Management Project Status Report for February 2010.

POSSIBLE MOTION

Should the Board agree with staff’s recommendation, a possible motion would be: “Move to acknowledge receipt of the Truckee River Flood Management Project Status Report for February 2010.”

Northern Nevada Water Planning Commission

STAFF REPORT

DATE: March 26, 2010
TO: Chairman and Members, Northern Nevada Water Planning Commission
FROM: June Davis, Administrative Secretary
SUBJECT: Informational report regarding the Truckee Meadows Water Authority Standing Advisory Committee

The Northern Nevada Water Planning Commission representative on the Truckee Meadows Water Authority Standing Advisory Committee (“TMWA SAC”) will update the Commission with a verbal informational report on the TMWA SAC.

Northern Nevada Water Planning Commission

STAFF REPORT

DATE: March 24, 2010
TO: Chairman and Members, Northern Nevada Water Planning Commission
FROM: Jim Smitherman, Water Resources Program Manager
SUBJECT: Agenda items for the May 5, 2010 Commission Meeting

1. Status report and activity update for the Central Truckee Meadows (Groundwater) Remediation District Program, Chris Benedict, Washoe County Department of Water Resources *
2. Status report on the third party Truckee River total maximum daily load for nutrients (“TMDL”) work plan for the total maximum nutrients on the Truckee River, and possible direction to staff, John Buzzone, Washoe County and Terri Svetich, City of Reno.
3. Status report on WRWC and NNWPC websites, and possible direction to staff, Chris Wessel, Water Management Planner.
4. Review updated Policies and Procedures including procedures for meeting cancellations, John Rhodes, Legal Counsel, and possible direction to staff.
5. Status report on development of the 2011 Comprehensive Regional Water Management Plan, including outline, timeline and contractual services, and possible direction to staff, Jim Smitherman, Water Resources Program Manager.
6. Program Manager’s Report, Jim Smitherman *
 - a. Status Report of Projects and Work Plan supported by the Regional Water Management Fund
 - b. Financial report on the Regional Water Management Fund
 - c. Status report on pending integration/consolidation of the Washoe County Department of Water Resources and the Truckee Meadows Water Authority
 - d. Truckee River Flood Management Project status report
 - e. Informational report from the NNWPC representative on the Truckee Meadows Water Authority Standing Advisory Committee
7. Discussion and possible direction to staff regarding agenda items for the June 2, 2010, Commission meeting and future meetings, Jim Smitherman.
8. Other Informational Items